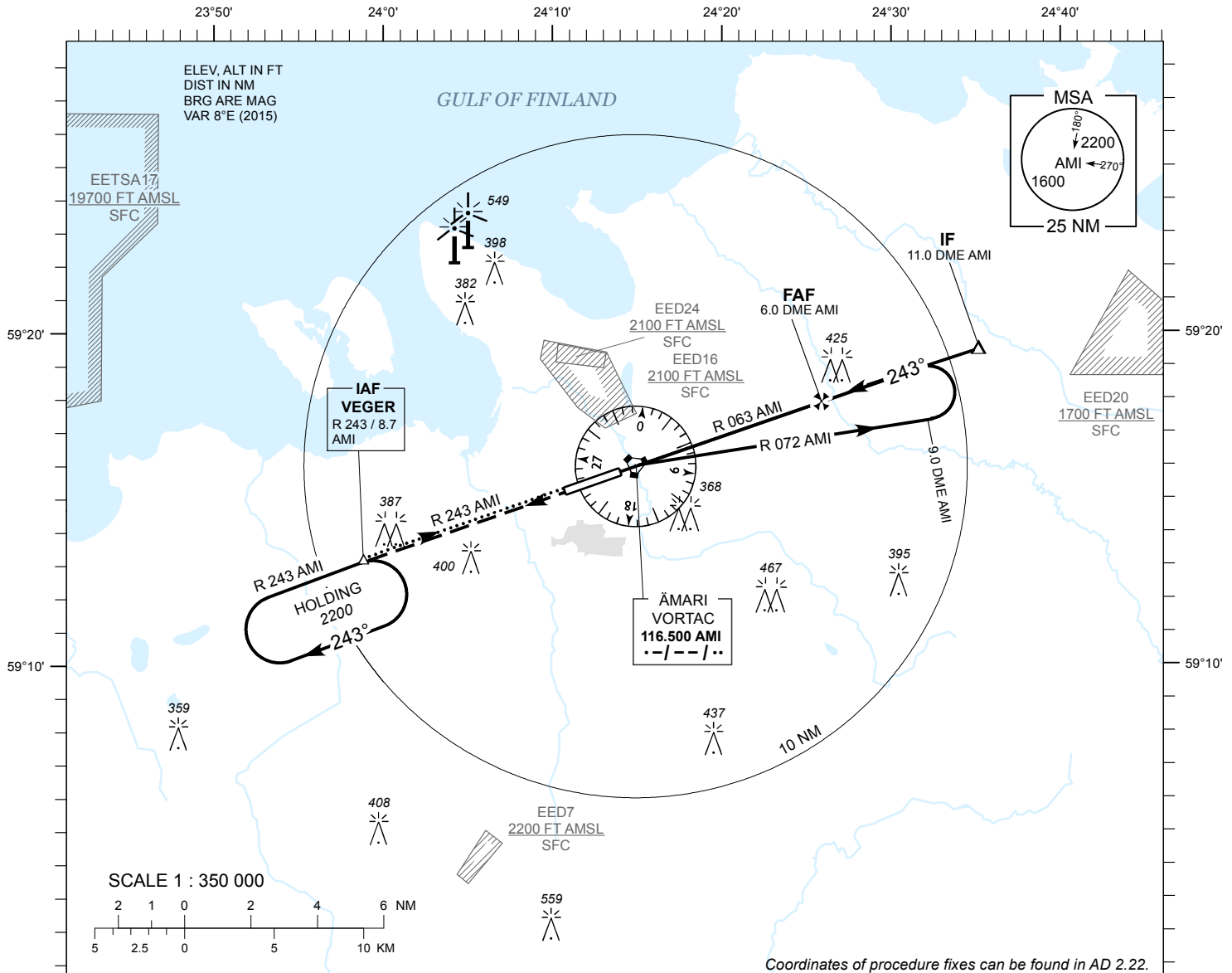


**INSTRUMENT  
APPROACH  
CHART - ICAO**

AD ELEV 68 FT  
HEIGHTS RELATED TO  
THR RWY 24 ELEV 60 FT

TALLINN RADAR 127.905  
ÄMARI TOWER 122.100 / 257.800

**ÄMARI (EEEE)  
MILITARY AERODROME  
VORTAC RWY 24  
(CAT A;B)**



**MISSED APPROACH**

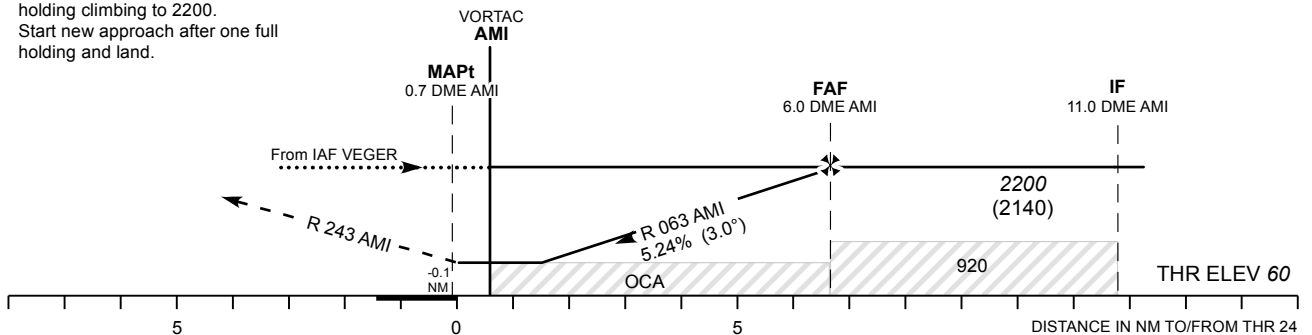
Climb on track 243 to 2200 and expect radar vectors. Contact TALLINN RADAR CH 127.905.

**COMMUNICATION FAILURE**

Climb straight ahead. Join VEGER holding climbing to 2200. Start new approach after one full holding and land.

TRANSITION ALT 5000

TACAN AMI	2 NM	3 NM	4 NM	5 NM
ALT	970	1290	1540	1920
HGT	(910)	(1230)	(1480)	(1860)



Timing not authorized for defining the MAPt.

OCA (H)	A	B		KT	80	90	100	120	140
Straight - in Approach	450 (390)		FAF- MAPt 6.7 NM	MIN : SEC	5:02	4:28	4:01	3:21	2:52
Circling	500 (430)	660 (590)	Rate of descent	FT / MIN	425	480	535	640	745

CHANGES: Intermediate MOCA and OCA added to profile view, OCA (H), TALLINN RADAR CH.