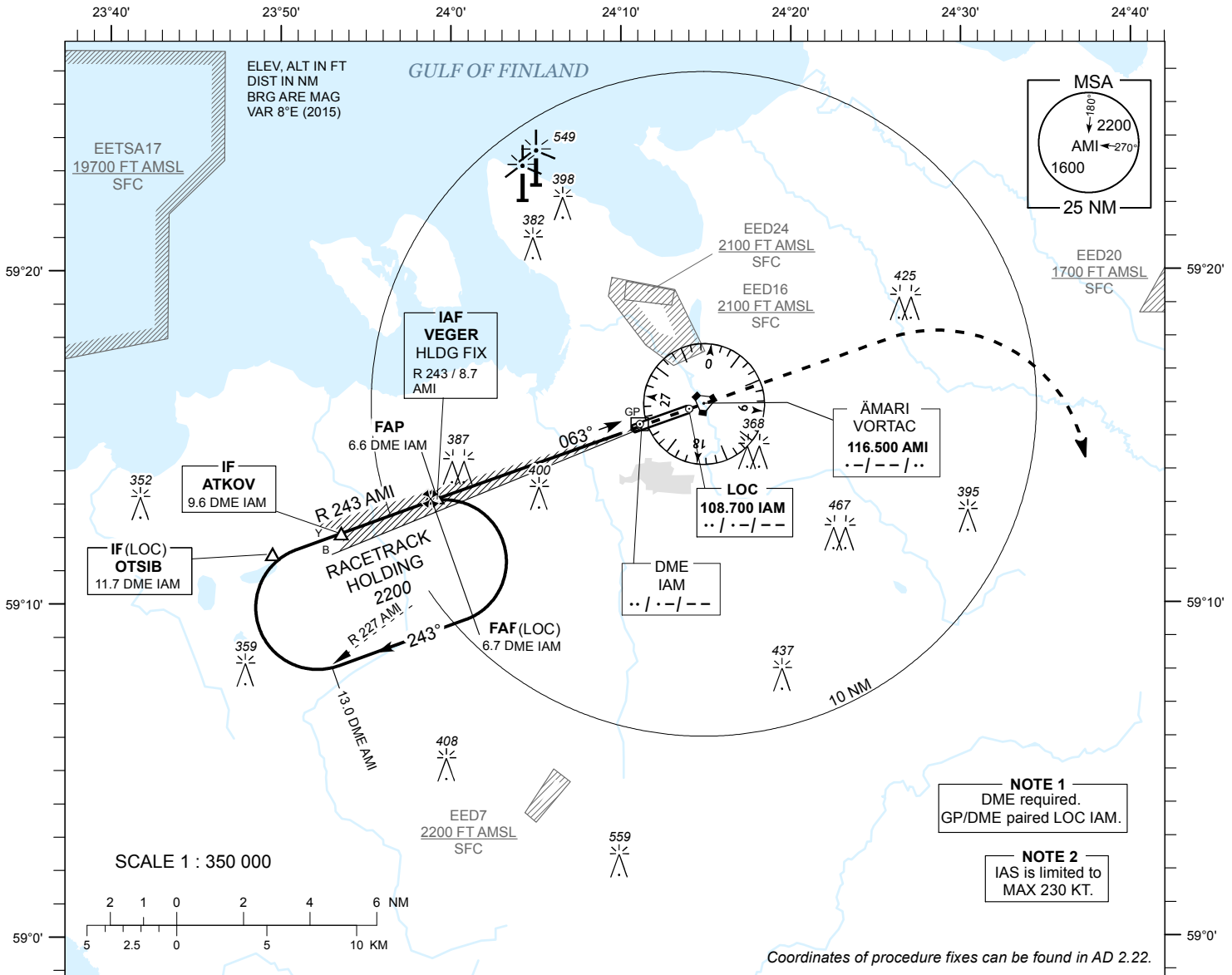


INSTRUMENT APPROACH CHART - ICAO

AD ELEV **68 FT**
 HEIGHTS RELATED TO
 THR RWY 06 ELEV **65 FT**

TALLINN RADAR 127.905
 ÄMARI TOWER 122.100 / 257.800

**ÄMARI (EEEE)
 MILITARY AERODROME**
 ILS or LOC RWY 06
 (CAT C;D;E)



NOTE 1
 DME required.
 GP/DME paired LOC IAM.

NOTE 2
 IAS is limited to
 MAX 230 KT.

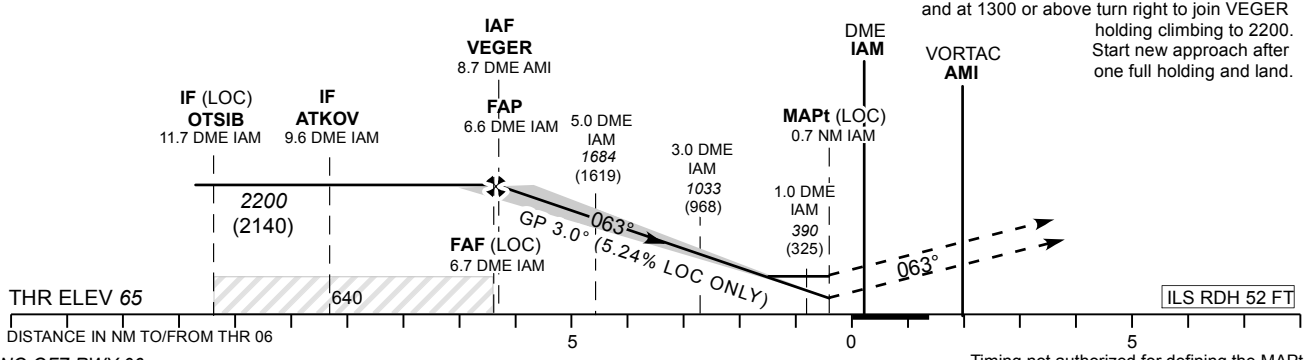
DME IAM	6 NM	5 NM	4 NM	3 NM	2 NM	1 NM
ALT	1980	1660	1340	1020	700	390
HGT	(1920)	(1600)	(1280)	(960)	(640)	(320)

Table for LOC ONLY approach.

TRANSITION ALT 5000

MISSED APPROACH
 Climb on track 063. After crossing AMI VORTAC and at 1300 or above turn right heading 160 climbing to 2200. Contact TALLINN RADAR CH 127.905.

COMMUNICATION FAILURE
 Climb on track 063. After crossing AMI VORTAC and at 1300 or above turn right to join VEGER holding climbing to 2200. Start new approach after one full holding and land.



NO OFZ RWY 06		C	D	E	LOC ONLY	KT	100	120	140	160	180	200	220
Straight-in Approach	CAT I	280 (215)	290 (225)	310 (245)	LOC ONLY	MIN : SEC	3:36	3:00	2:34	2:15	2:00	1:48	1:38
	LOC ONLY	640 (580)					FAF- MAPt 6.0 NM	FT / MIN	535	640	745	850	960
Circling		800 (730)		970 (900)	Rate of descent								

CHANGES: Intermediate MOCA added to profile view, TALLINN RADAR CH, editorial.