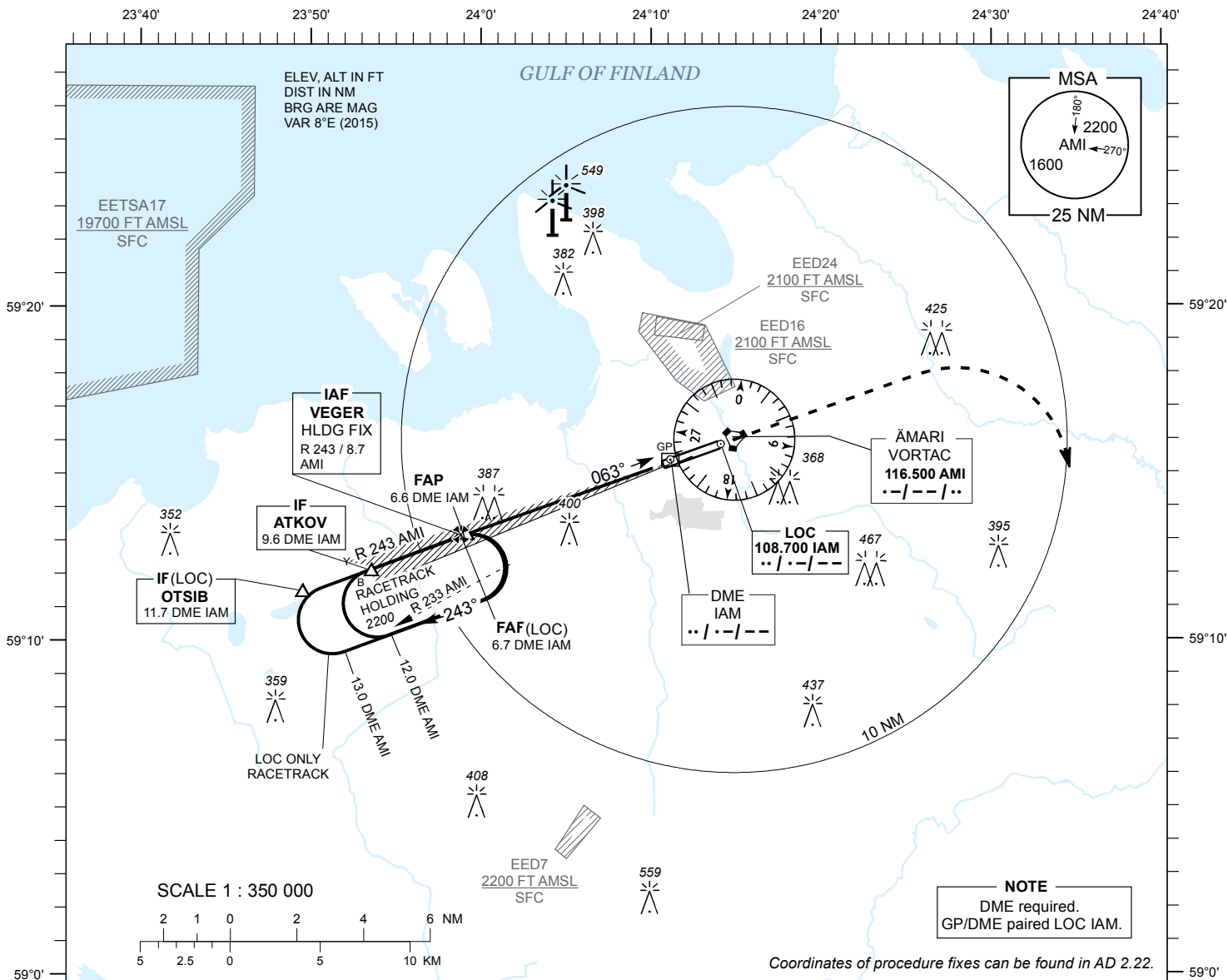


INSTRUMENT APPROACH CHART - ICAO

AD ELEV 68 FT
HEIGHTS RELATED TO
THR RWY 06 ELEV 65 FT

TALLINN RADAR 127.905
ÄMARI TOWER 122.100 / 257.800

ÄMARI (EEEE) MILITARY AERODROME ILS or LOC RWY 06 (CAT A;B)



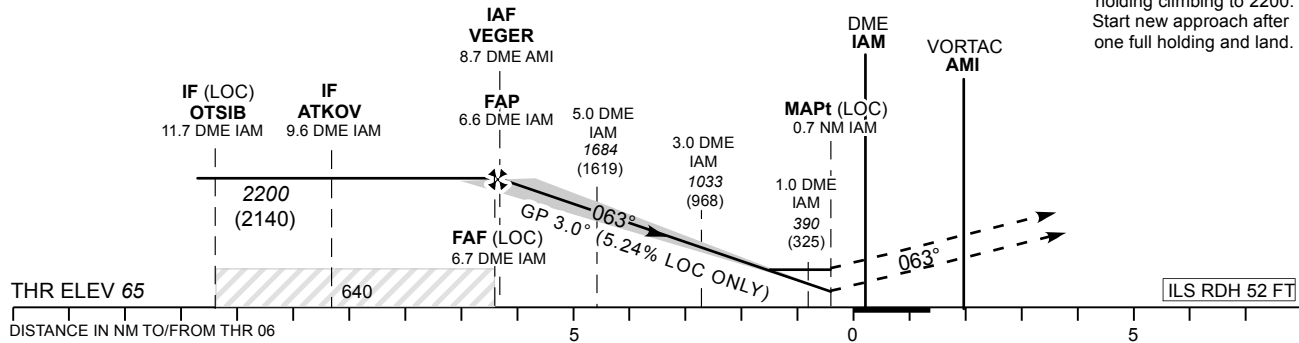
| | | | | | | |
|---------|--------|--------|--------|-------|-------|-------|
| DME IAM | 6 NM | 5 NM | 4 NM | 3 NM | 2 NM | 1 NM |
| ALT | 1980 | 1660 | 1340 | 1020 | 700 | 390 |
| HGT | (1920) | (1600) | (1280) | (960) | (640) | (320) |

Table for LOC ONLY approach.

TRANSITION ALT 5000

MISSED APPROACH
Climb on track 063. After crossing AMI VORTAC and at 1300 or above turn right heading 160 climbing to 2200. Contact TALLINN RADAR CH 127.905.

COMMUNICATION FAILURE
Climb on track 063. After crossing AMI VORTAC and at 1300 or above turn right to join VEGER holding climbing to 2200. Start new approach after one full holding and land.



| | | | | | | | | | | | | | |
|----------------------|----------|-----------|--|-----------|--|------------------|--|-----------|------|------|------|------|------|
| NO OFZ RWY 06 | | A | | B | | LOC ONLY | | KT | 80 | 90 | 100 | 120 | 140 |
| Straight-in Approach | CAT I | 259 (194) | | 272 (207) | | FAF- MAPt 6.0 NM | | MIN : SEC | 4:30 | 4:00 | 3:36 | 3:00 | 2:34 |
| | LOC ONLY | 640 (580) | | | | Rate of descent | | FT / MIN | 425 | 480 | 535 | 640 | 745 |
| Circling | | 500 (430) | | 660 (590) | | | | | | | | | |

CHANGES: Intermediate MOCA added to profile view. TALLINN RADAR CH, editorial.