

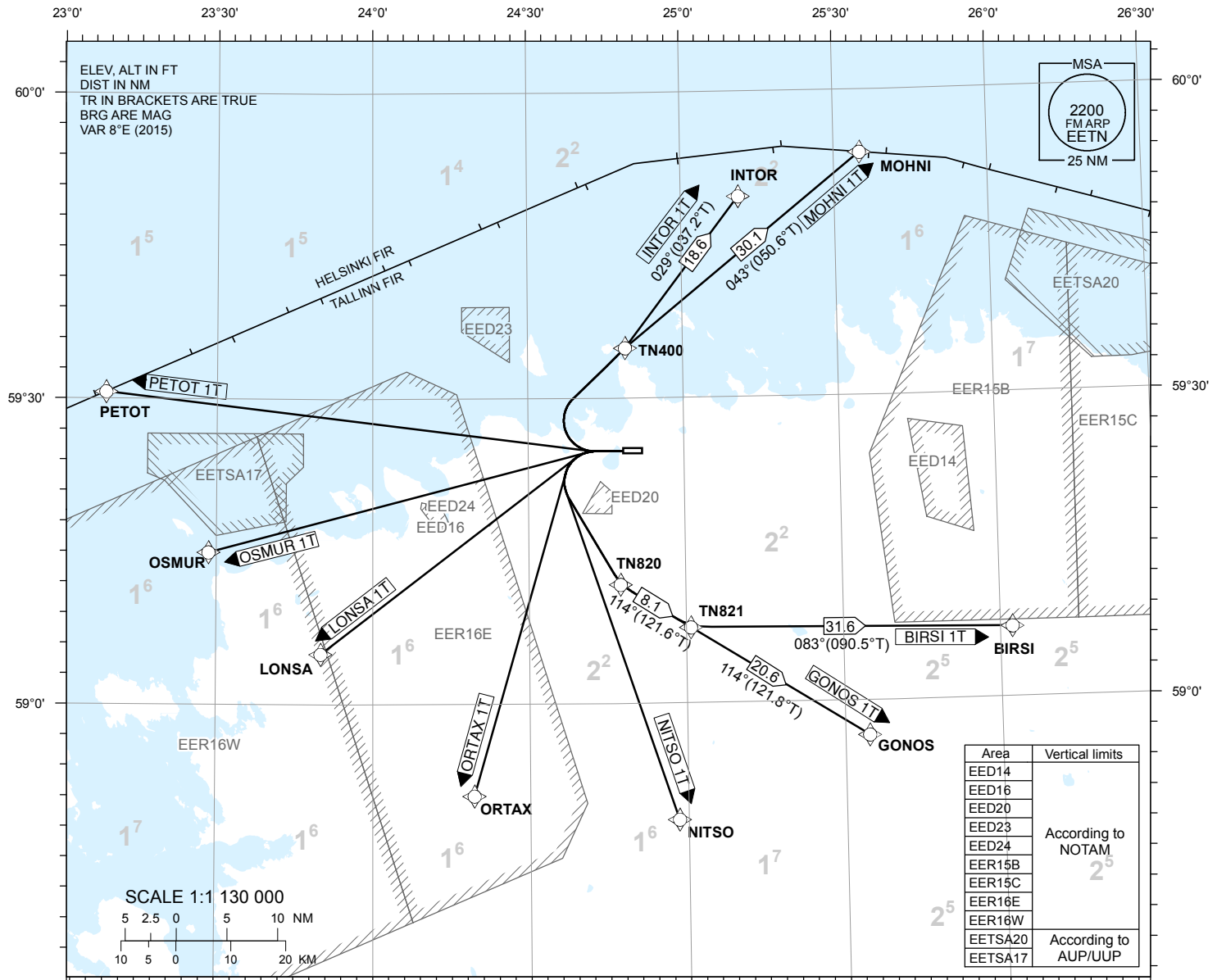
# STANDARD DEPARTURE CHART INSTRUMENT (SID) - ICAO

TRANSITION ALTITUDE  
5000

TOWER 135.900  
RADAR 127.900  
ATIS 124.875 / TEL: +372 625 8210

**LENNART MERI  
TALLINN (EETN)**  
RNAV (GNSS) SID  
RWY 26

BIRSI 1T GONOS 1T INTOR 1T LONSA 1T MOHNI 1T  
NITSO 1T ORTAX 1T OSMUR 1T PETOT 1T



**NAV SPECIFICATION**

P-RNAV APPROVAL REQUIRED. OTHERWISE INFORM ATC.

**EN-ROUTE CLEARANCE**

CONTACT TALLINN TWR ON FREQ 135.900 MHZ NOT EARLIER THAN 10 MINUTES PRIOR TO EOBT OR ESTIMATED ENGINE START-UP, ADVISE CALL SIGN, STAND/GATE NUMBER AND IF NOT ABLE TO FOLLOW RNAV SID.

PROC DESCRIPTION AND RNAV-UNABLE INSTRUCTION: REF AD 2.22.

**SQUAWK**

SQUAWK THE ASSIGNED SSR-CODE IMMEDIATELY PRIOR PUSH-BACK OR TAXI.

**INITIAL CLIMB**

CLIMB TO 4000 FT MSL OR ASSIGNED ALTITUDE IF LOWER. CLIMB TO A HIGHER LEVEL ONLY WHEN CLEARED BY ATC. MNM CLIMB GRADIENT 6.6% (400 FT/NM) UP TO 4000 FT MSL. AIRCRAFT UNABLE TO COMPLY SHALL INFORM ATC.

**RADIO CONTACT**

AFTER TAKE-OFF CONTACT TALLINN RADAR FREQ 127.900 MHZ.

**LINE-UP / INTERSECTION TAKE-OFF**

INFORM TALLINN TWR AS SOON AS POSSIBLE WHEN TAKE-OFF FROM TWY F INTERSECTION IS NOT POSSIBLE AND FULL RUNWAY LENGTH IS REQUIRED.

CHANGES: FINLAND FIR name.