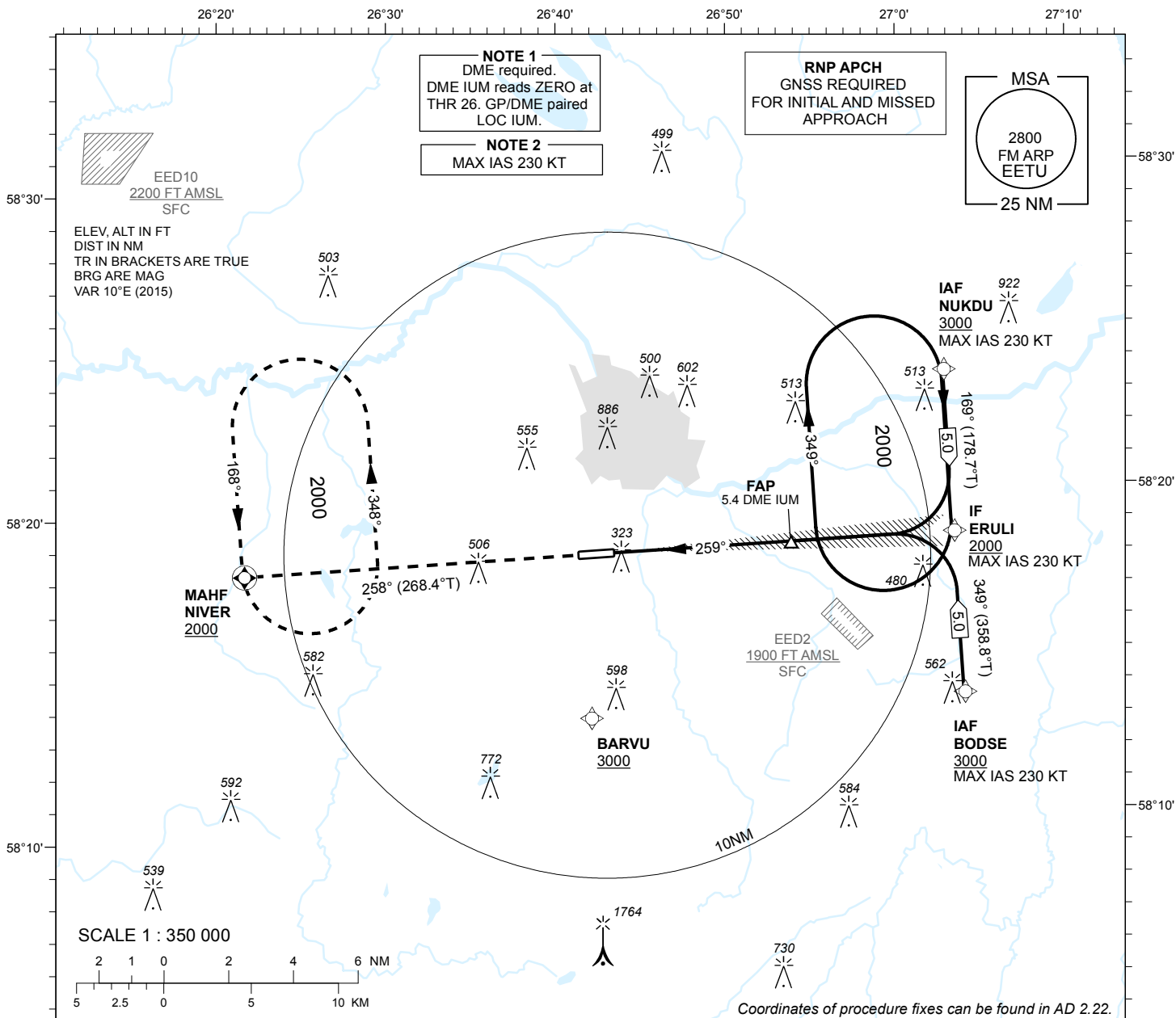


INSTRUMENT APPROACH CHART - ICAO

AD ELEV 220 FT
HEIGHTS RELATED TO
THR RWY 26 ELEV 192 FT

TWR 133.900
ATIS 123.130 / TEL: +372 730 9212

TARTU (EETU)
ILS Z RWY 26
(Cat A;B;C)



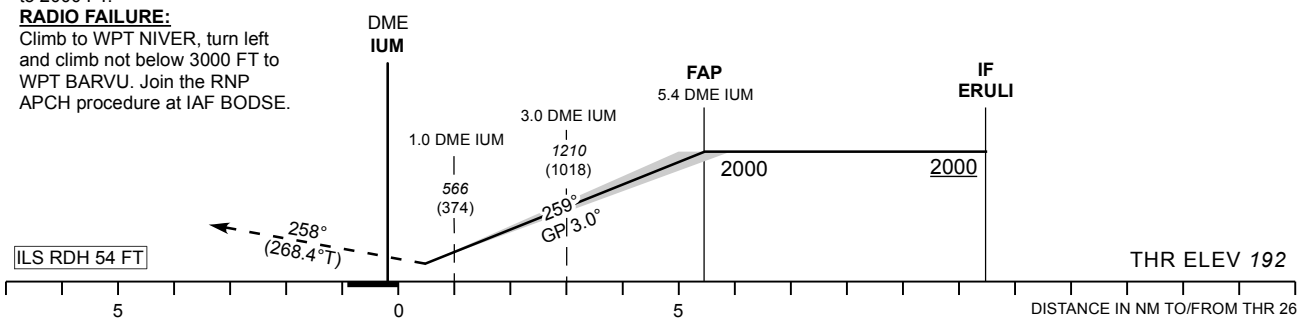
MISSED APPROACH:

Climb on track 258° to NIVER.
Enter NIVER holding climbing
to 2000 FT.

RADIO FAILURE:

Climb to WPT NIVER, turn left
and climb not below 3000 FT to
WPT BARVU. Join the RNP
APCH procedure at IAF BODSE.

TRANSITION ALT 5000



CHANGES: ATIS FREQ.

	OCA (H)	A	B	C		KT	90	100	120	140	160
Straight - in Approach	417 (225)	429 (237)	437 (245)	FAP-THR 5.4 NM	MIN:SEC	3:37	3:15	2:43	2:20	2:02	
Circling (S of AD only)	630 (410)	730 (510)	900 (680)	Rate of descent	FT / MIN	480	535	640	745	850	