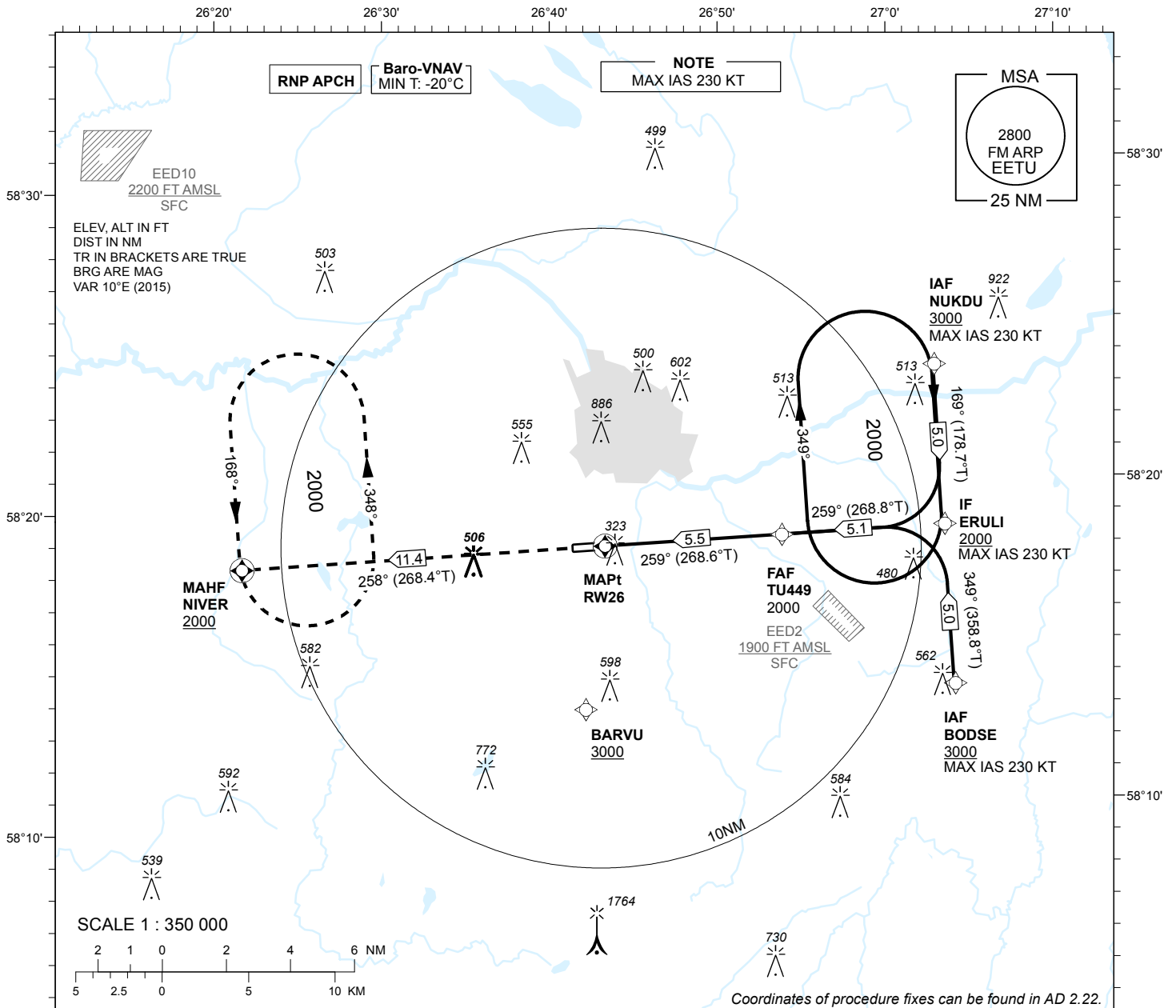


**INSTRUMENT  
APPROACH  
CHART - ICAO**

AD ELEV **220 FT**  
HEIGHTS RELATED TO  
THR RWY 26 ELEV **192 FT**

TWR 133.900  
ATIS 123.130 / TEL: +372 730 9212

**TARTU (EETU)**  
**RNAV (GNSS) RWY 26**  
(Cat A;B;C)



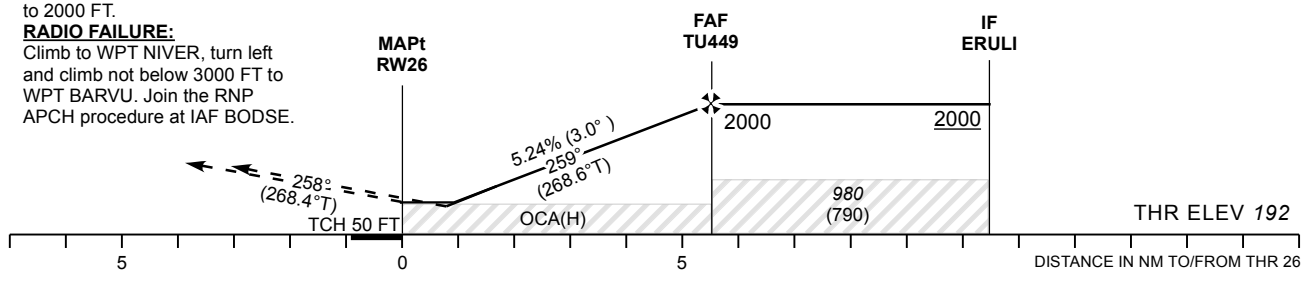
**MISSED APPROACH:**

Climb on track 258° to NIVER.  
Enter NIVER holding climbing  
to 2000 FT.

**RADIO FAILURE:**

Climb to WPT NIVER, turn left  
and climb not below 3000 FT to  
WPT BARVU. Join the RNP  
APCH procedure at IAF BODSE.

TRANSITION ALT 5000



CHANGES: ATIS FREQ.

|         |   |   |   | Final Approach DIST     | 5.0 NM | 4.0 NM          | 3.0 NM | 2.0 NM   | 1.0 NM |           |           |           |      |      |
|---------|---|---|---|-------------------------|--------|-----------------|--------|----------|--------|-----------|-----------|-----------|------|------|
|         |   |   |   | ALT                     | 1850   | 1530            | 1210   | 890      | 570    |           |           |           |      |      |
|         |   |   |   | HGT                     | 1650   | 1330            | 1010   | 690      | 370    |           |           |           |      |      |
| OCA (H) | A | B | C | LNAV                    |        | KT              | 90     | 100      | 120    | 140       | 160       |           |      |      |
|         |   |   |   | LNAV / VNAV             |        | FAF-MAPT 5.5 NM |        | MIN:SEC  |        | 3:40      | 3:18      | 2:45      | 2:22 | 2:04 |
|         |   |   |   | Circling (S of AD only) |        | Rate of descent |        | FT / MIN |        | 480       | 535       | 640       | 745  | 850  |
|         |   |   |   |                         |        |                 |        |          |        | 630 (410) | 730 (510) | 900 (680) |      |      |