

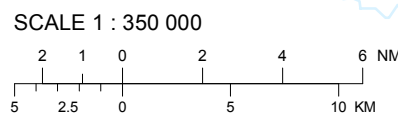
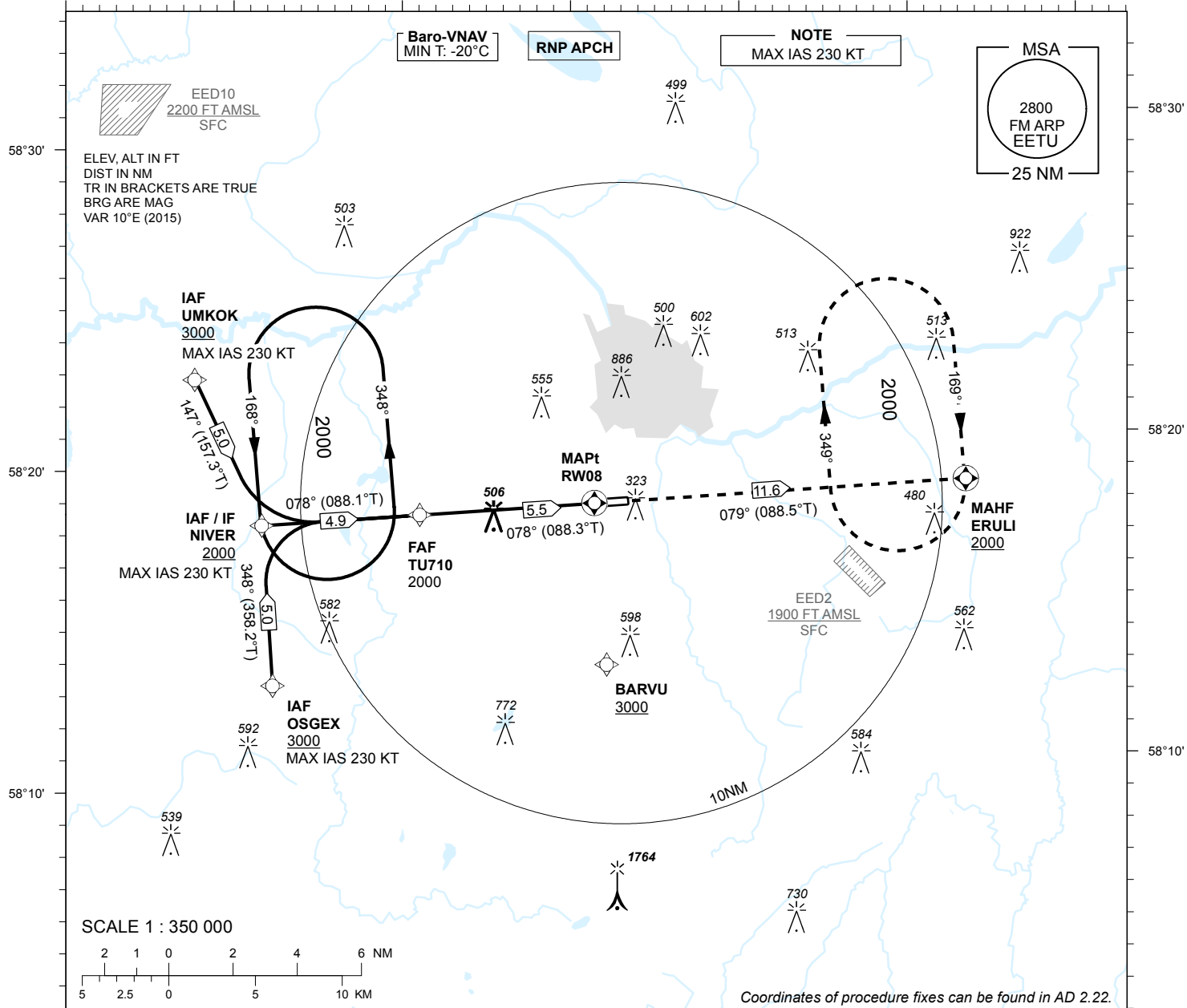
INSTRUMENT APPROACH CHART - ICAO

AD ELEV 220 FT
 HEIGHTS RELATED TO
 THR RWY 08 ELEV 210 FT

TWR 133.900
 ATIS 123.130 / TEL: +372 730 9212

TARTU (EETU) RNAV (GNSS) RWY 08 (Cat A;B;C)

26°10' 26°20' 26°30' 26°40' 26°50' 27°0' 27°10'

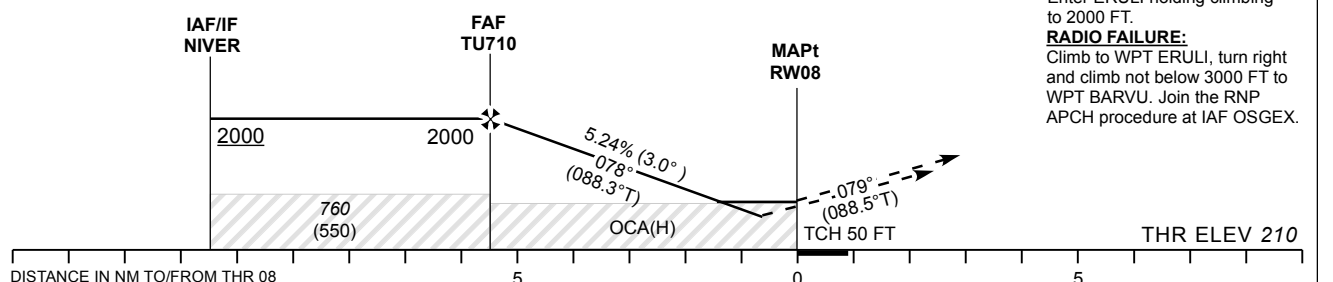


Coordinates of procedure fixes can be found in AD 2.22.

26°10' 26°20' 26°30' 26°40' 26°50' 27°0' 27°10'

TRANSITION ALT 5000

MISSED APPROACH:
 Climb on track 079° to ERULI. Enter ERULI holding climbing to 2000 FT.
RADIO FAILURE:
 Climb to WPT ERULI, turn right and climb not below 3000 FT to WPT BARVU. Join the RNP APCH procedure at IAF OSGEX.



DISTANCE IN NM TO/FROM THR 08

CHANGES: ATIS FREQ.

	Final Approach DIST			5.0 NM	4.0 NM	3.0 NM	2.0 NM	1.0 NM (VNAV)			
	A	B	C	ALT	HGT	KT	MIN:SEC	FT / MIN			
OCA (H)				1850	1530	1210	890	570			
LNAV		680 (470)		1640	1320	1000	680	360			
LNAV / VNAV		470 (260)			90	100	120	140	160		
Circling (S of AD only)	630 (410)	730 (510)	900 (680)	FAF-MAPT 5.5 NM	MIN:SEC	3:40	3:18	2:45	2:22	2:04	
				Rate of descent		FT / MIN	480	535	640	745	850