

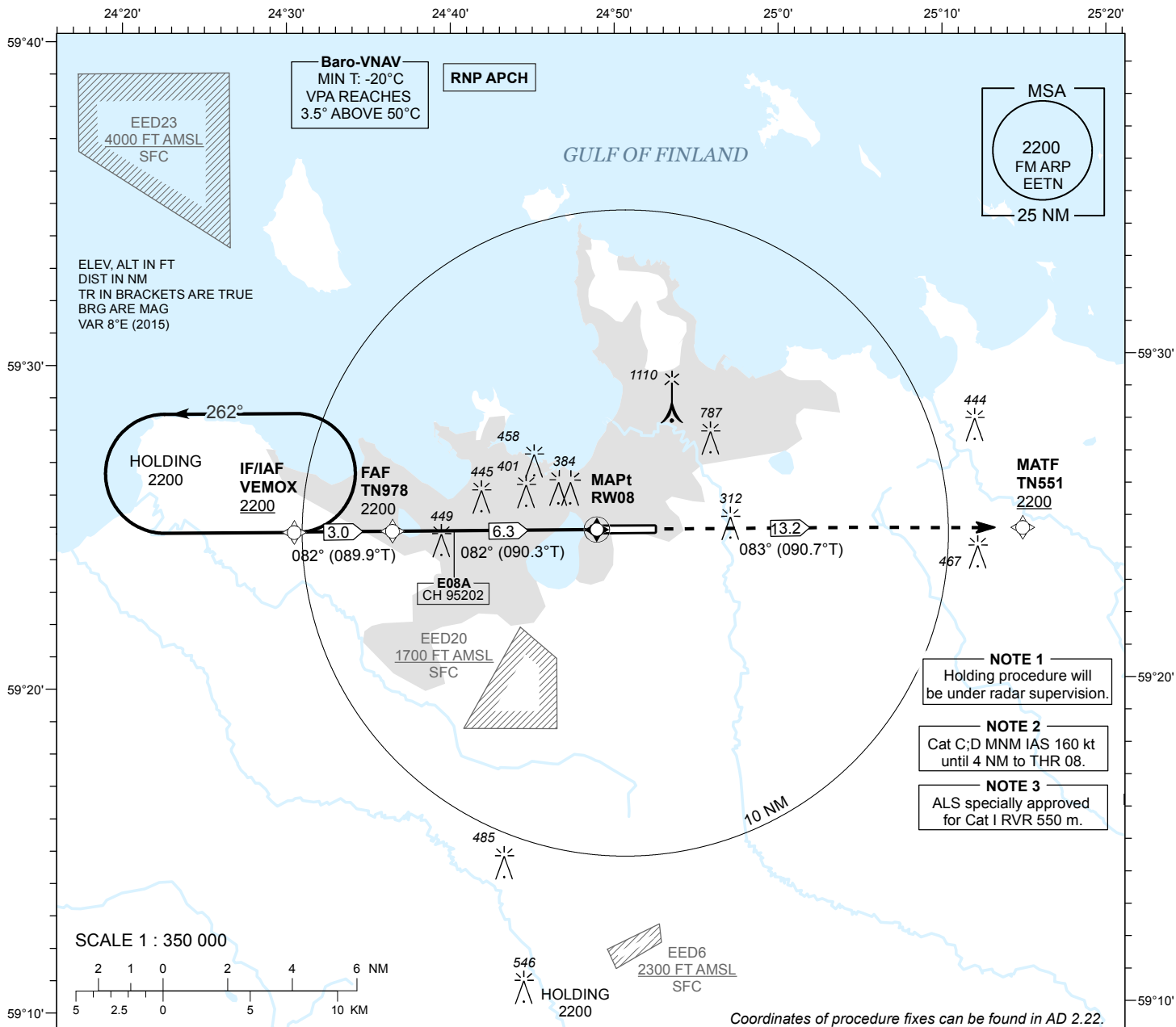
**INSTRUMENT
APPROACH
CHART - ICAO**

**SBAS
CH 95202
E08A**

**AD ELEV 135 FT
HEIGHTS RELATED TO
THR RWY 08 ELEV 130 FT**

**RADAR 127.900
TOWER 135.900
ATIS 124.875 / TEL: +372 625 8210**

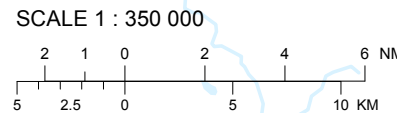
**LENNART MERI
TALLINN (EETN)
RNAV (GNSS) RWY 08**



NOTE 1
Holding procedure will be under radar supervision.

NOTE 2
Cat C;D MNM IAS 160 kt until 4 NM to THR 08.

NOTE 3
ALS specially approved for Cat I RVR 550 m.

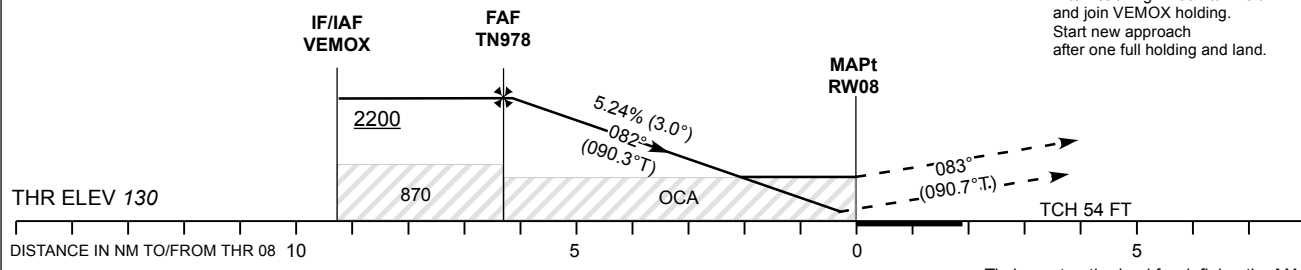


Coordinates of procedure fixes can be found in AD 2.22.

TRANSITION ALT 5000

MISSED APPROACH
Climb to TN551 and contact radar FREQ 127.9 MHZ.

RADIO FAILURE
After reaching TN551 turn left and join VEMOX holding. Start new approach after one full holding and land.



CHANGES: NOTE 1

ALS specially approved for Cat I RVR 550 m.

OCA (H)	Final Approach DIST				Timing not authorized for defining the MAPt.						
	A	B	C	D	6.0 NM	5.0 NM	4.0 NM	3.0 NM	2.0 NM		
LPV Cat I	336 (206)	349 (219)	357 (227)	367 (237)	2100	1780	1460	1140	820		
LNAV (VNAV)	520 (390)	530 (400)	540 (410)	550 (420)	1970	1650	1330	1010	690		
LNAV	650 (520)				FAF-MAPt 6.3 NM	MIN:SEC	4:14	3:48	3:10	2:43	2:23
Circling (S of AD only)	1360 (1230)		1510 (1380)		Rate of descent	FT / MIN	475	530	635	740	850