

INSTRUMENT APPROACH CHART - ICAO

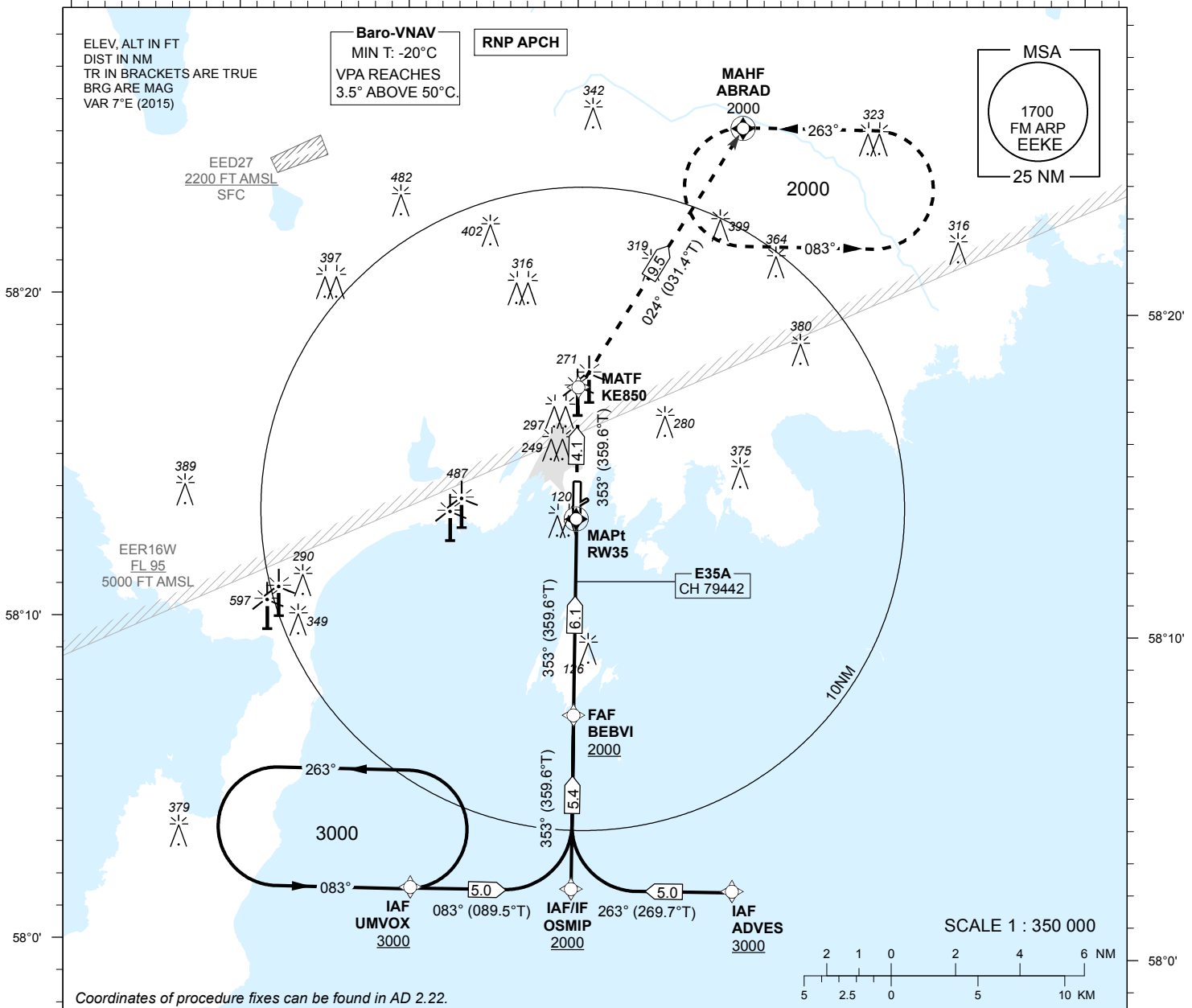
SBAS
CH 79442
E35A

AD ELEV 15 FT
HEIGHTS RELATED TO
THR RWY 35 ELEV 8 FT

INFORMATION 118.050

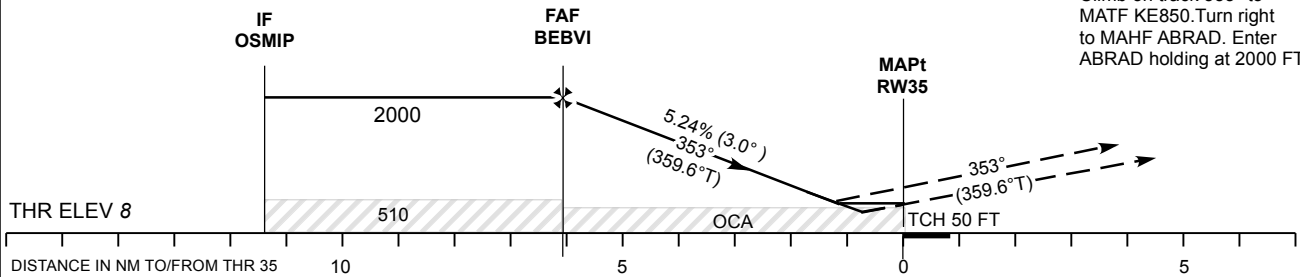
KURESSAARE (EEKE)
RNAV (GNSS) RWY 35
(Cat A;B;C)

22°0' 22°10' 22°20' 22°30' 22°40' 22°50' 23°0'



TRANSITION ALT 5000

MISSED APPROACH:
Climb on track 353° to MATF KE850. Turn right to MAHF ABRAD. Enter ABRAD holding at 2000 FT.



Decision heights (DH) below 250 FT shall not be used due to APV approach operation Type A limitations.

OCA (H)	Final Approach DIST			5.0 NM	4.0 NM	3.0 NM	2.0 NM	1.0 NM (LPV)			
	A	B	C	ALT	HGT	MIN:SEC	FT / MIN				
LPV	249 (241)	262 (254)	270 (262)	1650	1340	1020	700	390			
LNAV / VNAV	250 (240)	270 (260)			1640	1330	1010	690	380		
LNAV	380 (370)			KT	90	100	120	140	160		
Circling E of AD only	610 (600)			710 (700)	Rate of descent	FT / MIN	475	530	635	740	850

CHANGES: OCA/H, EER16W added, obstacles.