

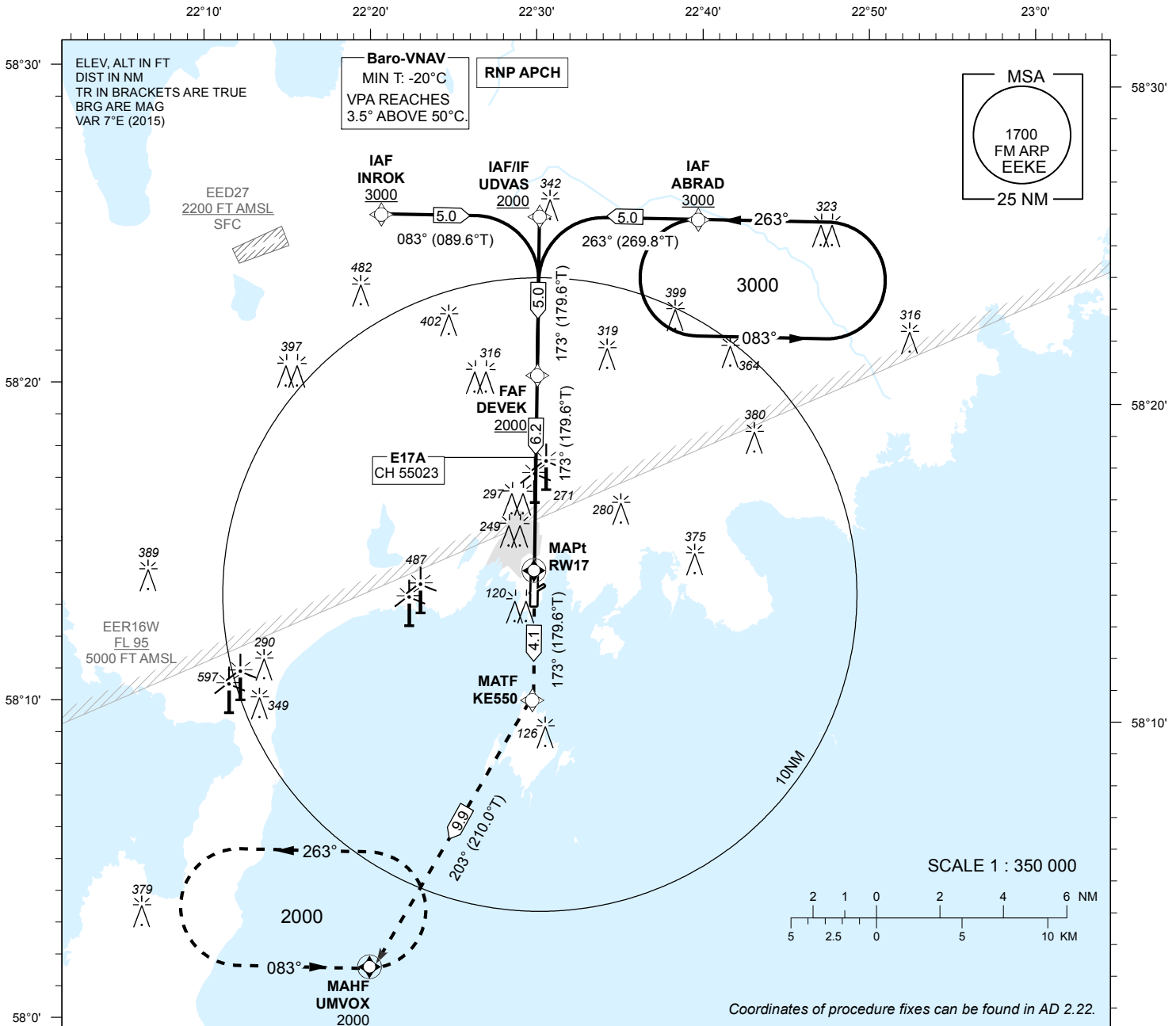
INSTRUMENT APPROACH CHART - ICAO

SBAS
CH 55023
E17A

AD ELEV 15 FT
HEIGHTS RELATED TO
THR RWY 17 ELEV 10 FT

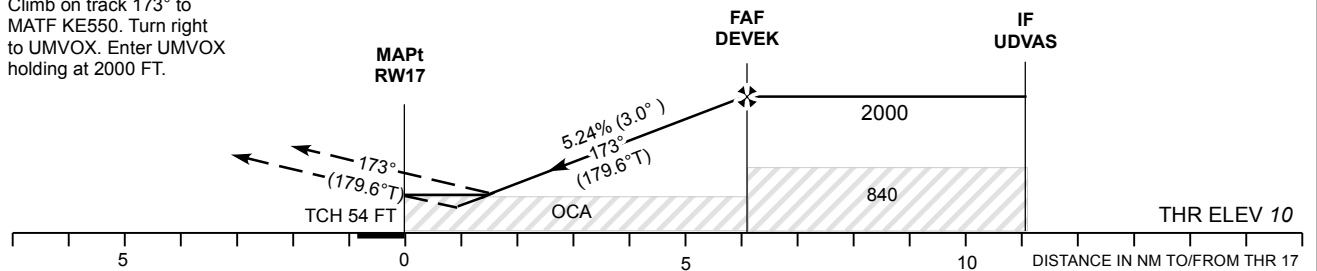
INFORMATION 118.050

KURESSAARE (EEKE)
RNAV (GNSS) RWY 17
(Cat A;B;C)



MISSED APPROACH:
Climb on track 173° to MATF KE550. Turn right to UMVOX. Enter UMVOX holding at 2000 FT.

TRANSITION ALT 5000



Decision heights (DH) below 250 FT shall not be used due to APV approach operation Type A limitations.

OCA (H)	Final Approach DIST			5.0 NM	4.0 NM	3.0 NM	2.0 NM	1.0 NM (LPV)
	A	B	C	ALT	HGT	MIN:SEC	FT / MIN	Rate of descent
242 (232)	255 (245)	263 (253)	1660	1650	1340	1030	710	400
410 (400)	430 (420)			KT	90	100	120	140 160
530 (520)				FAF-MAPt 6.2 NM	MIN:SEC	4:08	3:43	3:06 2:39 2:20
610 (600)		710 (700)		Rate of descent	FT / MIN	475	530	635 740 850

CHANGES: OCA/H, LPV, EER16W added, obstacles.