

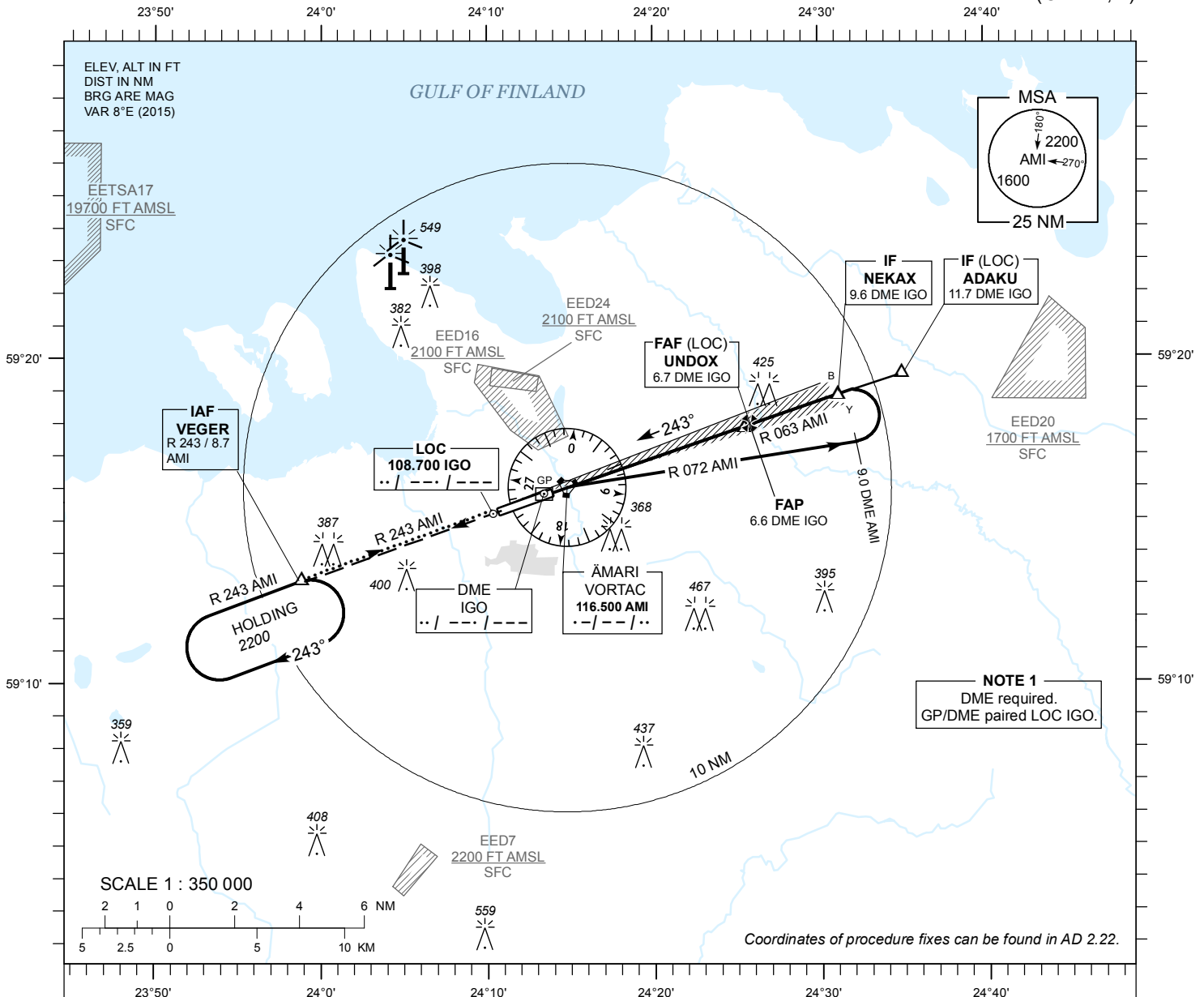
**INSTRUMENT  
APPROACH  
CHART - ICAO**

AD ELEV **68 FT**  
HEIGHTS RELATED TO  
THR RWY 24 ELEV **60 FT**

TALLINN RADAR 127.900  
ÄMARI TOWER 122.100 / 257.800

**ÄMARI (EEEI)  
MILITARY AERODROME**

ILS or LOC RWY 24  
(CAT A;B)



Climb on track 243 to 2200 and expect radar vectors. Contact TALLINN RADAR FREQ 127.9 MHz.

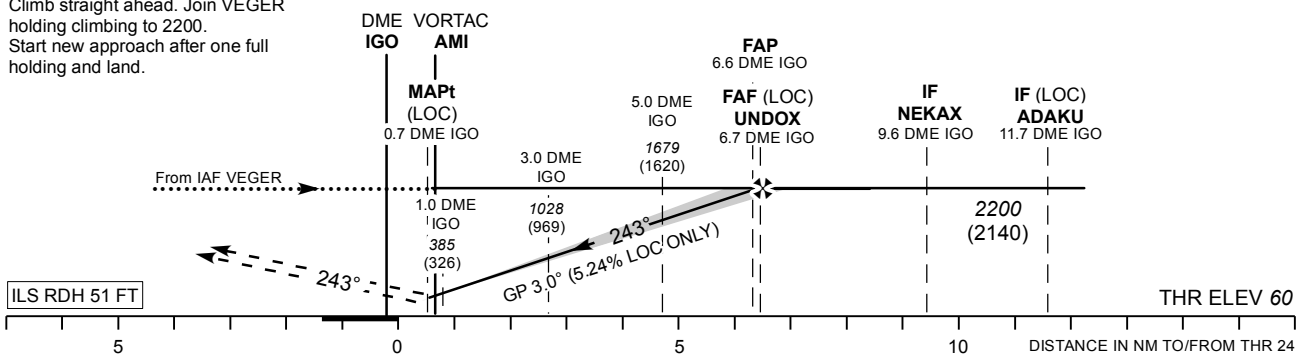
**COMMUNICATION FAILURE**

Climb straight ahead. Join VEGER holding climbing to 2200. Start new approach after one full holding and land.

TRANSITION ALT 5000

|         |       |       |       |        |        |        |
|---------|-------|-------|-------|--------|--------|--------|
| DME IGO | 1 NM  | 2 NM  | 3 NM  | 4 NM   | 5 NM   | 6 NM   |
| ALT     | 390   | 700   | 1020  | 1340   | 1660   | 1980   |
| HGT     | (330) | (650) | (960) | (1280) | (1600) | (1920) |

Table for LOC ONLY approach.



|                      |         |          |           |   |                  |                 |          |      |      |      |      |     |
|----------------------|---------|----------|-----------|---|------------------|-----------------|----------|------|------|------|------|-----|
| Straight-in Approach | OCA (H) | CAT I    | 298 (238) | B | 310 (250)        | LOC ONLY        | KT       | 80   | 90   | 100  | 120  | 140 |
|                      |         | LOC ONLY | 380 (320) |   | FAF- MAPt 6.0 NM | MIN : SEC       | 4:30     | 4:00 | 3:36 | 3:00 | 2:34 |     |
| Circling             |         |          | 500 (430) |   | 660 (590)        | Rate of descent | FT / MIN | 425  | 480  | 535  | 640  | 745 |