

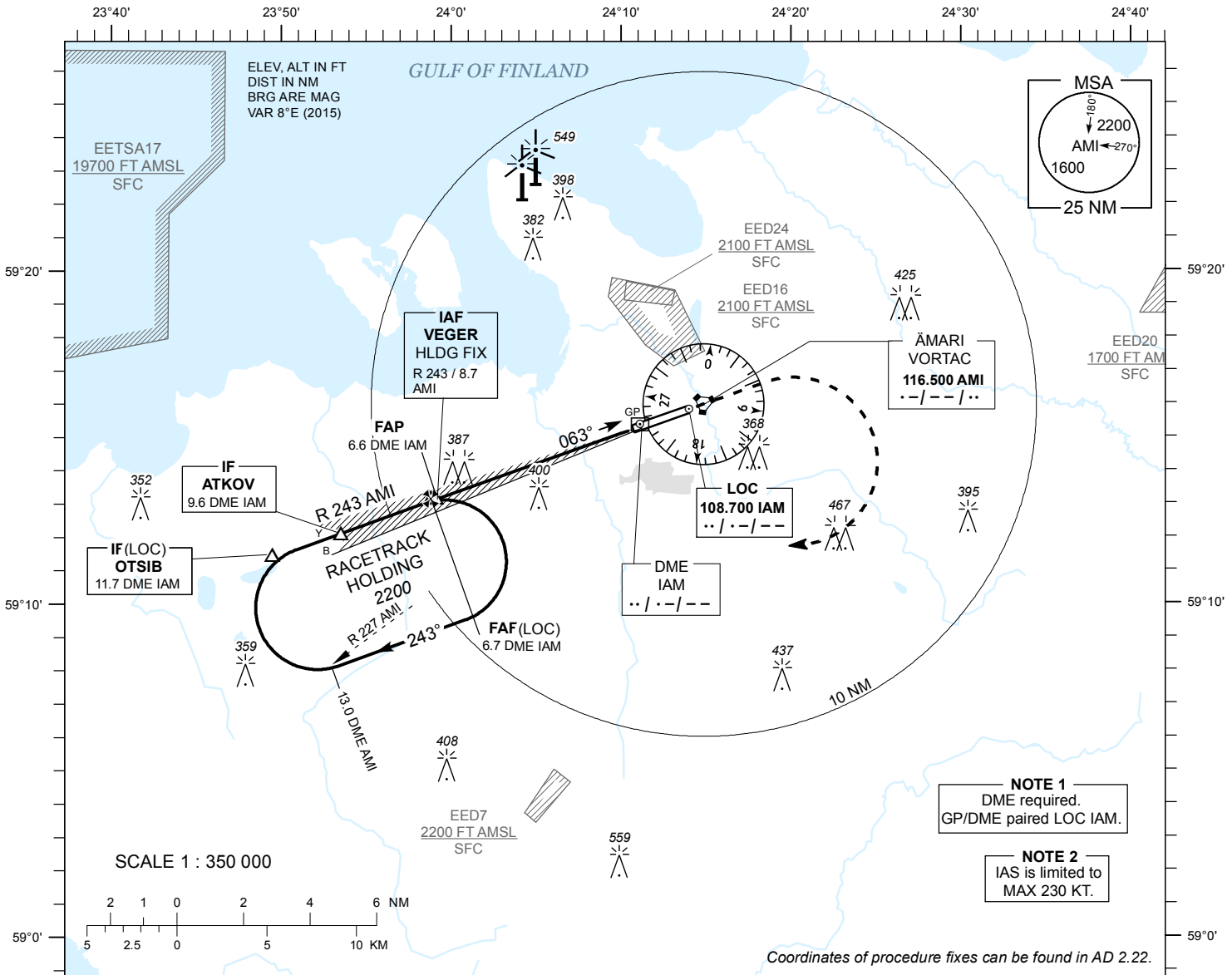
**INSTRUMENT
APPROACH
CHART - ICAO**

AD ELEV **68 FT**
HEIGHTS RELATED TO
THR RWY 06 ELEV **65 FT**

TALLINN RADAR 127.900
ÄMARI TOWER 122.100 / 257.800

**ÄMARI (EEEE)
MILITARY AERODROME**

ILS or LOC RWY 06
(CAT C;D;E)



DME IAM	6 NM	5 NM	4 NM	3 NM	2 NM	1 NM
ALT	1980	1660	1340	1020	700	390
HGT	(1920)	(1600)	(1280)	(960)	(640)	(320)

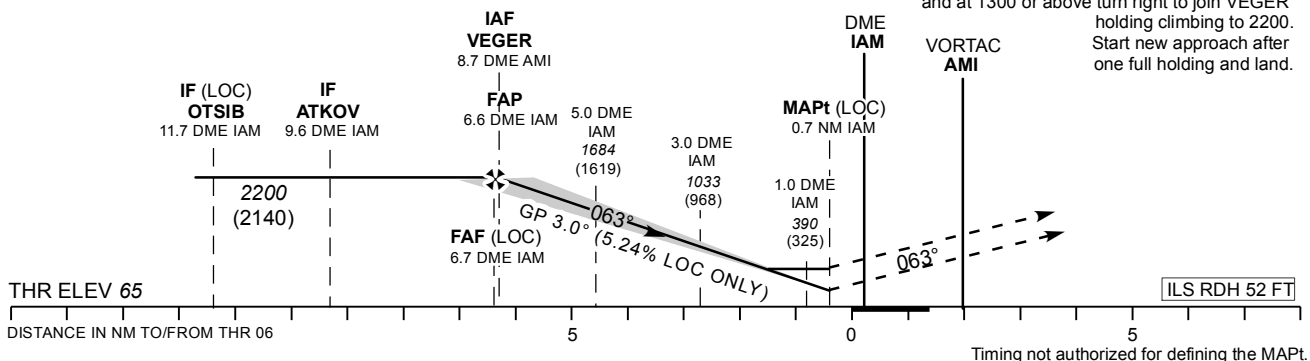
Table for LOC ONLY approach.

TRANSITION ALT 5000

MISSED APPROACH
Climb on track 063. After crossing AMI VORTAC and at 1300 or above turn right heading 160 climbing to 2200. Contact TALLINN RADAR FREQ 127.9 MHz.

COMMUNICATION FAILURE
Climb on track 063. After crossing AMI VORTAC and at 1300 or above turn right to join VEGER holding climbing to 2200. Start new approach after one full holding and land.

CHANGES: TWR FREQ.



Straight-in Approach	CAT I	280 (215)	290 (225)	310 (245)	LOC ONLY	KT	100	120	140	160	180	200	220
	LOC ONLY	640 (580)			FAF- MAPt 6.0 NM	MIN : SEC	3:36	3:00	2:34	2:15	2:00	1:48	1:38
Circling		800 (730)		970 (900)	Rate of descent	FT / MIN	535	640	745	850	960	1065	1170