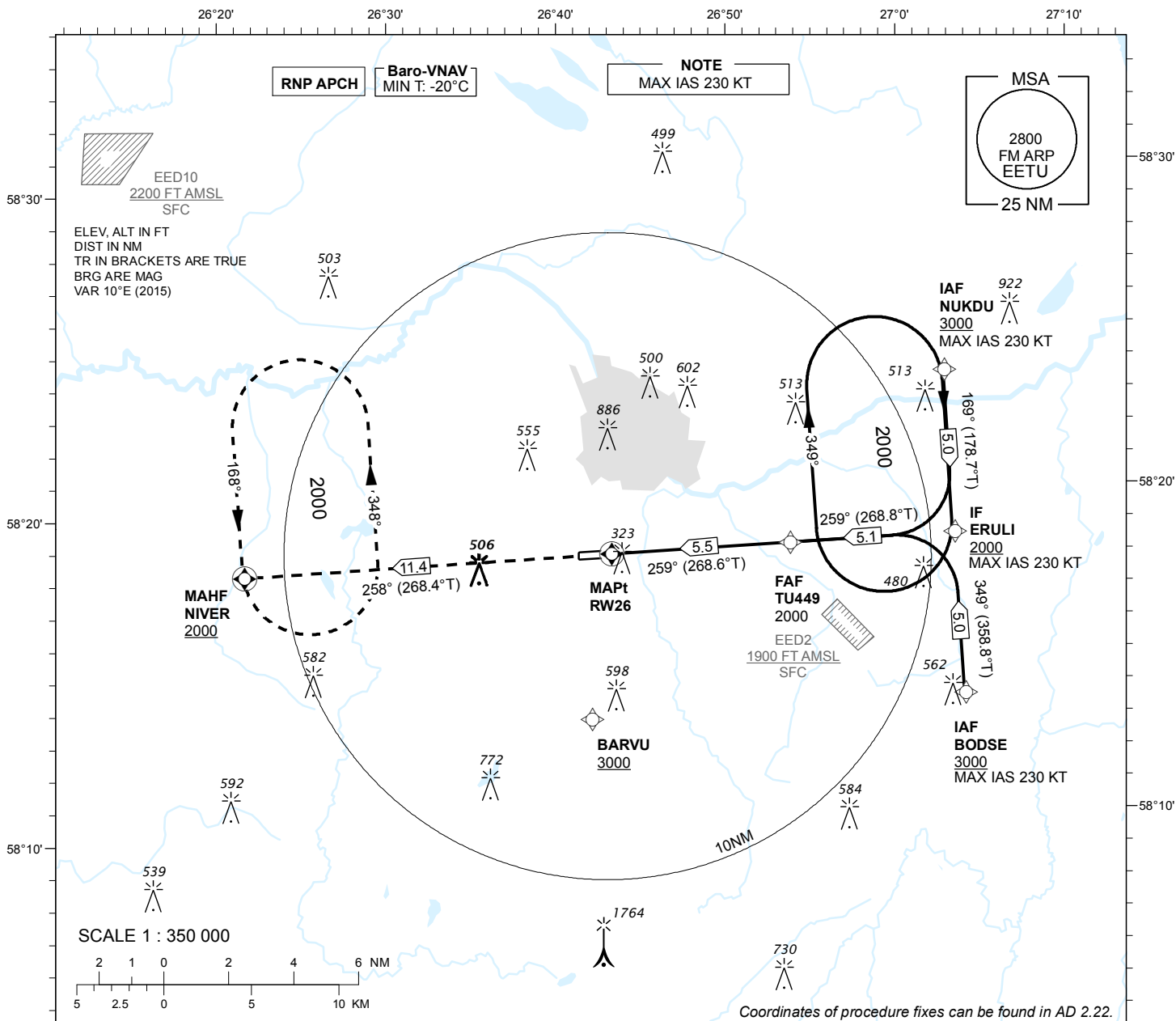


**INSTRUMENT  
APPROACH  
CHART - ICAO**

AD ELEV **220 FT**  
HEIGHTS RELATED TO  
THR RWY 26 ELEV **192 FT**

TWR 133.900  
ATIS 123.125 / TEL: +372 730 9212

**TARTU (EETU)  
RNAV (GNSS) RWY 26**  
(Cat A;B;C)



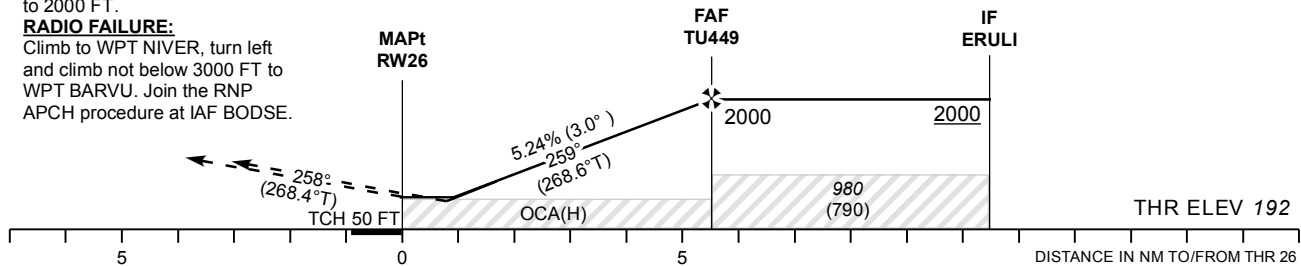
**MISSED APPROACH:**

Climb on track 258° to NIVER.  
Enter NIVER holding climbing  
to 2000 FT.

**RADIO FAILURE:**

Climb to WPT NIVER, turn left  
and climb not below 3000 FT to  
WPT BARVU. Join the RNP  
APCH procedure at IAF BODSE.

TRANSITION ALT 5000



CHANGES: new IAF names NUKDU and BODSE.

				Final Approach DIST	5.0 NM	4.0 NM	3.0 NM	2.0 NM	1.0 NM				
				ALT	1850	1530	1210	890	570				
				HGT	1650	1330	1010	690	370				
OCA (H)	A	B	C										
LNAV				540 (350)		KT	90	100	120	140	160		
LNAV / VNAV				510 (320)		FAF-MAPT 5.5 NM	MIN:SEC	3:40	3:18	2:45	2:22	2:04	
Circling (S of AD only)				630 (410)	730 (510)	900 (680)	Rate of descent	FT / MIN	480	535	640	745	850