

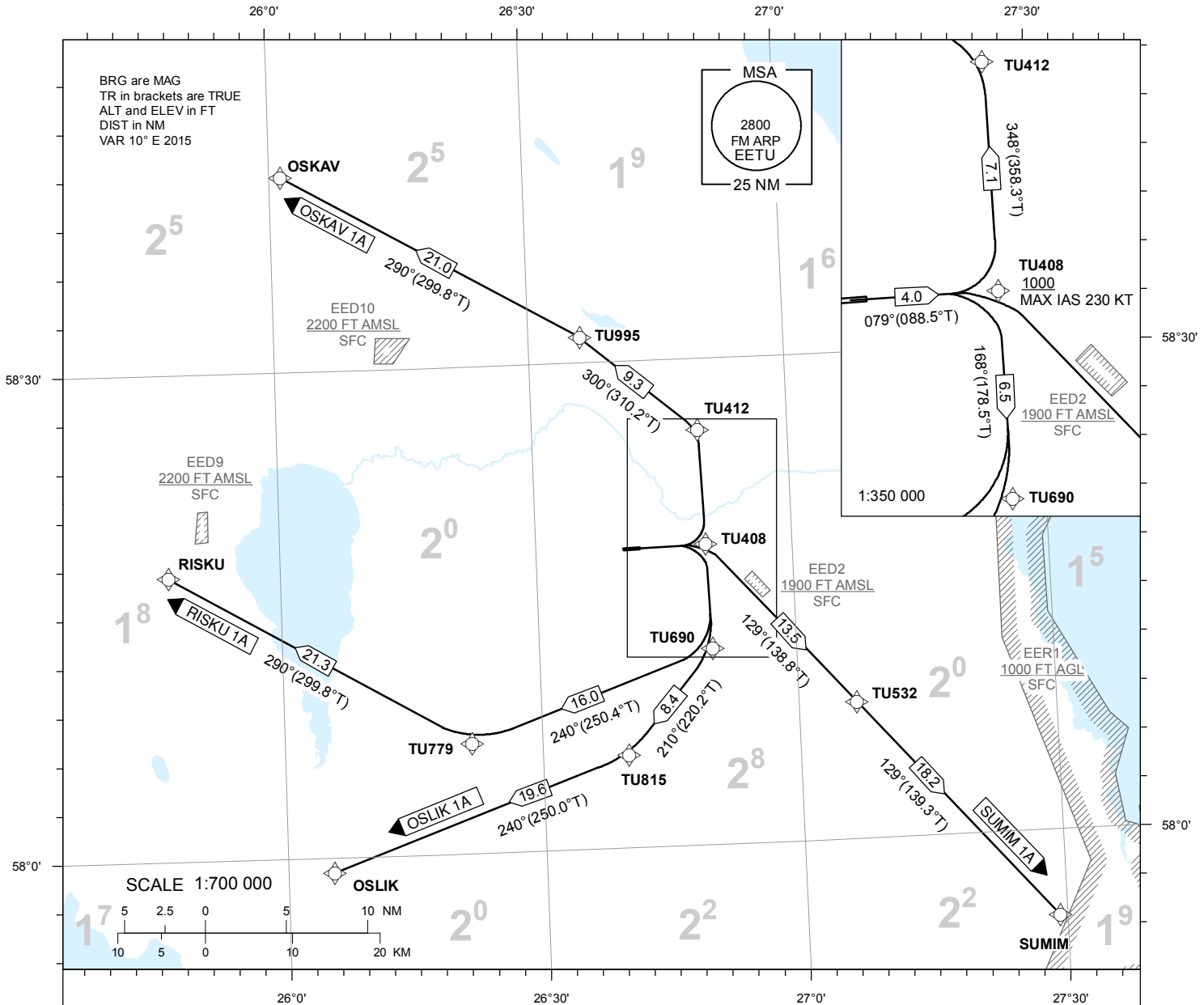
STANDARD DEPARTURE CHART INSTRUMENT (SID) - ICAO

TRANSITION ALTITUDE
5000

TWR 133.900
ATIS 123.125 / TEL: +372 730 9212

TARTU (EETU)
RNAV (GNSS) SID
RWY 08

OSKAV 1A OSLIK 1A
RISKU 1A SUMIM 1A



NAV SPECIFICATION
P-RNAV APPROVAL REQUIRED. OTHERWISE INFORM ATC.
DME/DME OPS
NOT SUPPORTED.
EN-ROUTE CLEARANCE
CONTACT TARTU TWR ON FREQ 133.900 MHZ NOT EARLIER THAN 10 MINUTES
PRIOR TO EOBT OR ESTIMATED ENGINE START-UP,
ADVISE CALL SIGN AND IF NOT ABLE TO FOLLOW RNAV SID.
ADDITIONS TO SID
INSTRUCTIONS CONTAINING DEVIATION FROM SID MAY BE INCLUDED IN THE
ATC CLEARANCE PRIOR TO TAKE OFF.
ROUTES
CODING TABLES AND WPT LIST: REF AD 2.22.
INITIAL CLIMB
CLIMB TO ASSIGNED ALTITUDE CLEARED BY ATC.
CONTINGENCY PROCEDURE
LOSS OF RNAV CAPABILITY INFORM ATC TO GET ALTERNATIVE CLEARANCE.

**MINIMUM CLIMB GRADIENTS
DUE TO AIRSPACE RESTRICTIONS:**

OSKAV 1A 4,1% (250 FT/NM) UP TO TU408,
AFTER THAT 3,7% (230 FT/NM)

OSLIK 1A 4,1% (250 FT/NM)

RISKU 1A 4,1% (250 FT/NM) UP TO TU408

SUMIM 1A 4,3% (260 FT/NM)

AIRCRAFT UNABLE TO COMPLY SHALL
INFORM ATC.

CHANGES: AMA values added, editorial.