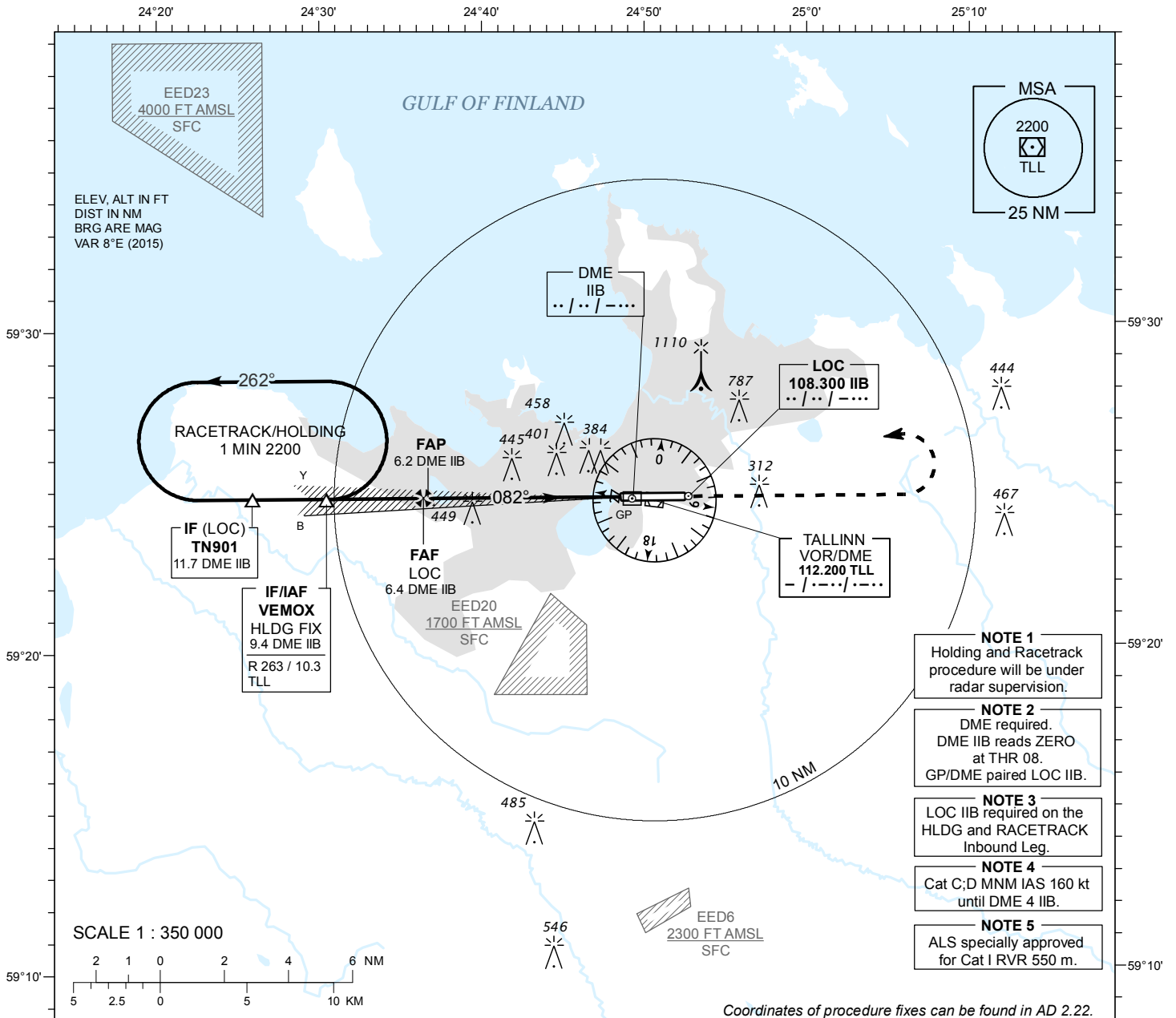


**INSTRUMENT  
APPROACH  
CHART - ICAO**

AD ELEV **135 FT**  
HEIGHTS RELATED TO  
THR RWY 08 ELEV **130 FT**

RADAR 127.900  
TOWER 135.900  
ATIS 124.875 / TEL: +372 625 8210

**LENNART MERI  
TALLINN (EETN)  
ILS or LOC RWY 08**



- NOTE 1**  
Holding and Racetrack procedure will be under radar supervision.
- NOTE 2**  
DME required.  
DME IIB reads ZERO at THR 08.  
GP/DME paired LOC IIB.
- NOTE 3**  
LOC IIB required on the HLDG and RACETRACK Inbound Leg.
- NOTE 4**  
Cat C,D MNM IAS 160 kt until DME 4 IIB.
- NOTE 5**  
ALS specially approved for Cat I RVR 550 m.

Coordinates of procedure fixes can be found in AD 2.22.

24°20' 24°30' 24°40' 24°50' 25°0' 25°10'

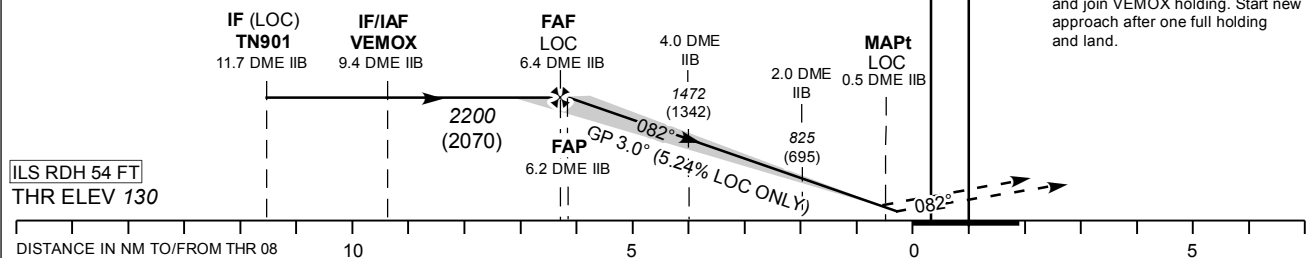
DME IIB	DME 6	DME 5	DME 4	DME 3	DME 2
ALT	2130	1800	1470	1150	820
HGT	(2000)	(1670)	(1340)	(1020)	(690)

Table for LOC ONLY approach

TRANSITION ALT 5000

**MISSED APPROACH**  
Climb on track 082° to 2200 (2070) and contact radar FREQ 127.9 MHz.

**RADIO FAILURE**  
After reaching 2200 (2070) turn left and join VEMOX holding. Start new approach after one full holding and land.



ILS RDH 54 FT  
THR ELEV 130

ALS specially approved for Cat I RVR 550 m.

Timing not authorized for defining the MAPt.

	OCA (H)	A	B	C	D								
Straight-in Approach	CAT I	300 (170)	312 (182)	321 (191)	331 (201)	GS	KT	90	100	120	140	160	
	LOC ONLY	540 (410)				FAF-MAPT 5.9 NM	MIN:SEC	3:56	3:32	2:57	2:32	2:13	
Circling (S of AD only)		1360 (1230)		1510 (1380)		Rate of descent	FT / MIN	475	530	635	740	850	

CHANGES : AD and THR elevation, ILS Cat I OCA, obstacle elevations, NOTE 2, editorial.