

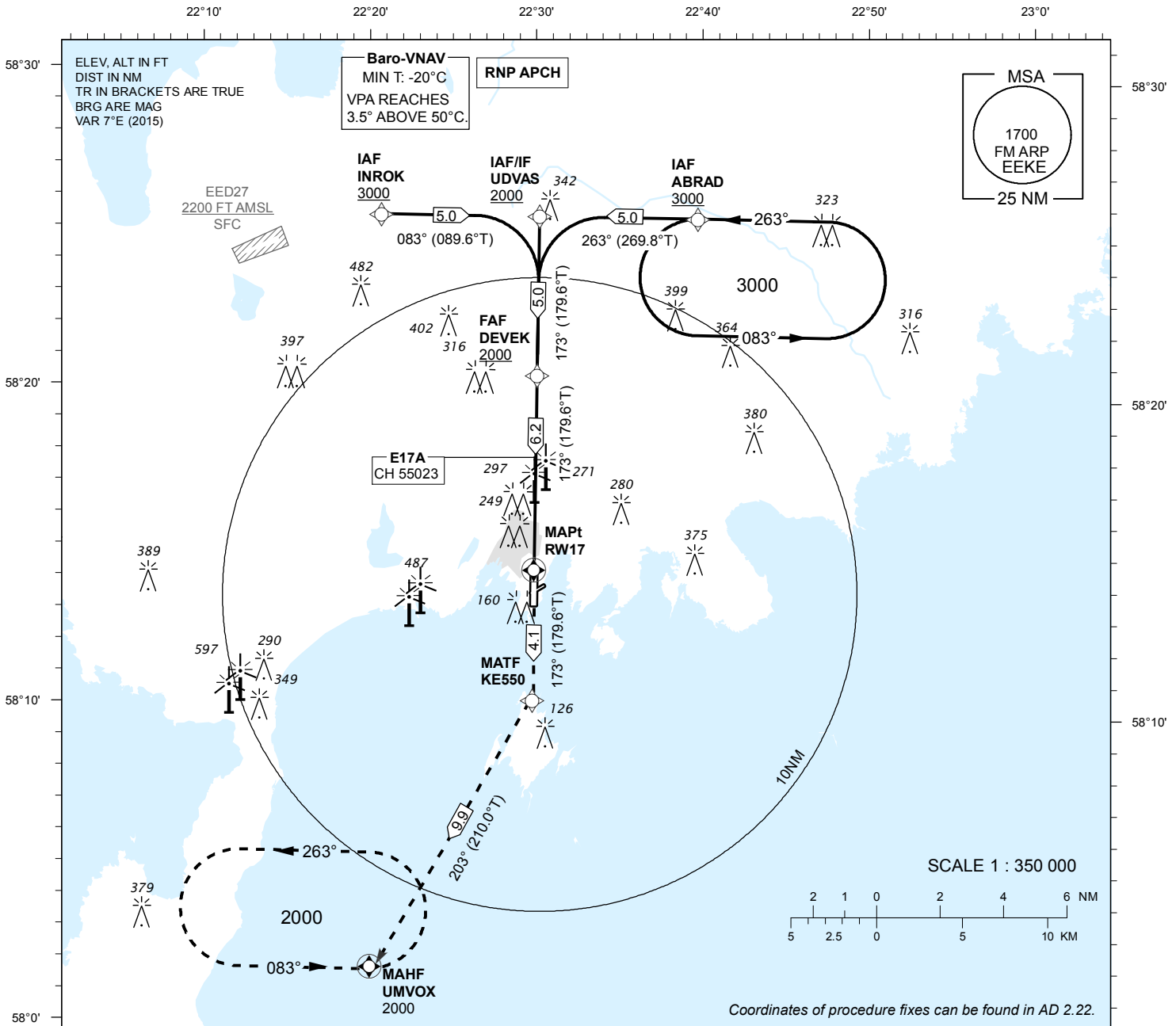
**INSTRUMENT
APPROACH
CHART - ICAO**

**SBAS
CH 55023
E17A**

**AD ELEV 15 FT
HEIGHTS RELATED TO
THR RWY 17 ELEV 10 FT**

INFORMATION 118.050

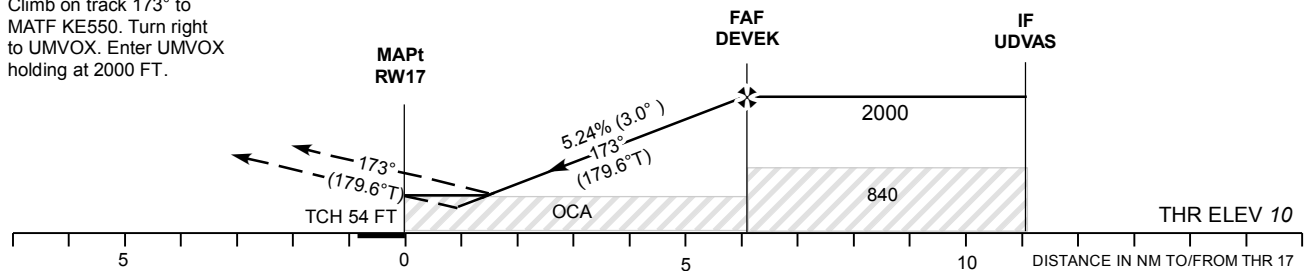
**KURESSAARE (EEKE)
RNAV (GNSS) RWY 17
(Cat A;B;C)**



Coordinates of procedure fixes can be found in AD 2.22.

CHANGES: LPV OCA(H), AD elevation, obstacle elevations, editorial.

MISSED APPROACH:
Climb on track 173° to MATF KE550. Turn right to UMVOX. Enter UMVOX holding at 2000 FT.



OCA (H)	A		B		C		Final Approach DIST	5.0 NM	4.0 NM	3.0 NM	2.0 NM	1.0 NM (LPV)	
	261 (251)		430 (420)		263 (253)		ALT	1660	1340	1030	710	400	
LPV	261 (251)		430 (420)		263 (253)		HGT	1650	1330	1020	700	390	
LNAV / VNAV	410 (400)		430 (420)				KT		90	100	120	140	160
LNAV			530 (520)				FAF-MAPt 6.2 NM	MIN:SEC	4:08	3:43	3:06	2:39	2:20
Circling E of AD only	610 (600)				710 (700)		Rate of descent	FT / MIN	475	530	635	740	850