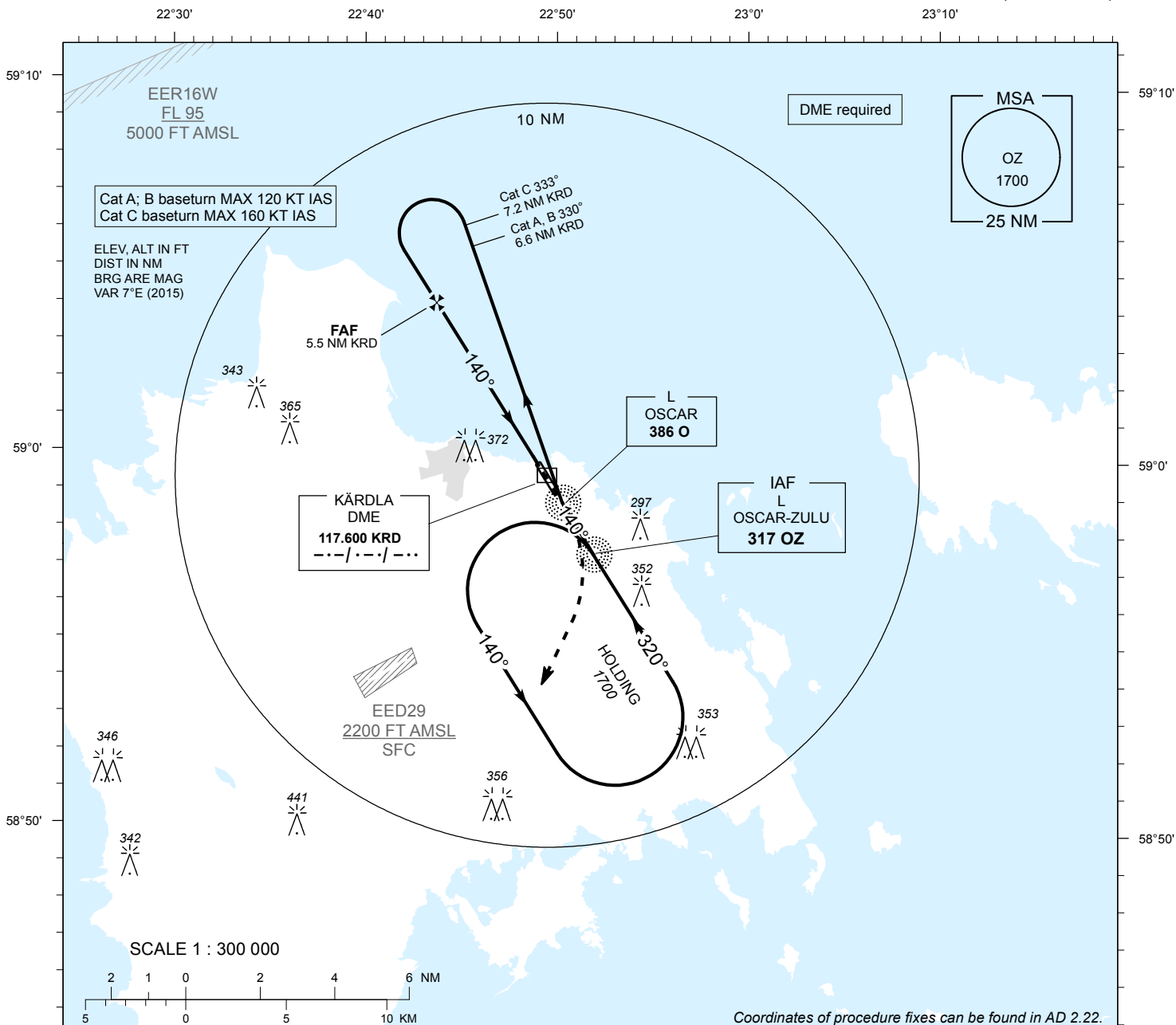


# INSTRUMENT APPROACH CHART - ICAO

AD ELEV 18 FT  
HEIGHTS RELATED TO  
THR RWY 14 ELEV 12 FT

INFORMATION 133.400

**KÄRDLA (EEKA)**  
**NDB RWY 14**  
(Cat A;B;C)

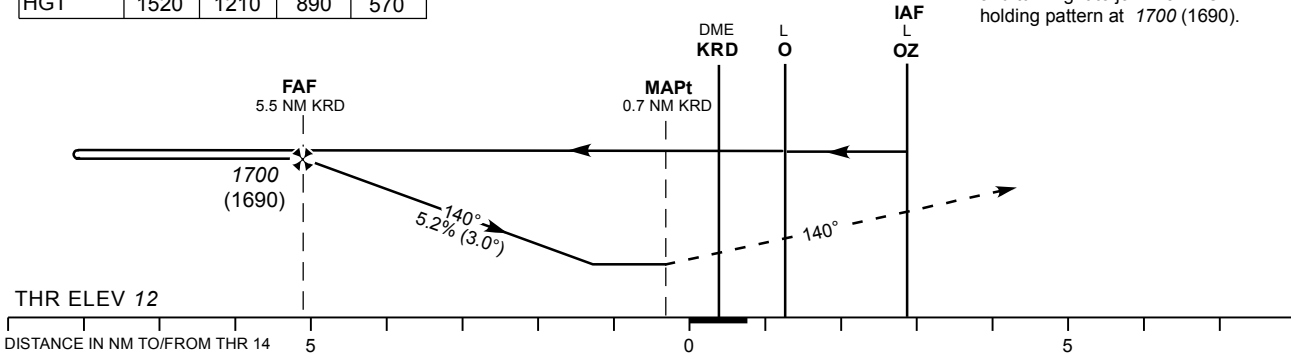


| DME KR D | DME 5 | DME 4 | DME 3 | DME 2 |
|----------|-------|-------|-------|-------|
| ALT      | 1530  | 1220  | 900   | 580   |
| HGT      | 1520  | 1210  | 890   | 570   |

TRANSITION ALT 5000

**MISSED APPROACH**

Climb on track 140° to 500 (490) and turn right to join L 317 OZ holding pattern at 1700 (1690).



Timing from table not authorized for defining the MAPt.

| OCA (H)                 | A         | B         | C         | KT              | 90       | 100  | 120  | 140  | 160  |      |
|-------------------------|-----------|-----------|-----------|-----------------|----------|------|------|------|------|------|
| Straight-in-Approach    | 440 (430) |           |           | FAF-MAPT 4.9 NM | MIN:SEC  | 3:16 | 2:56 | 2:27 | 2:06 | 1:50 |
| Circling (E of AD only) | 420 (410) | 510 (500) | 750 (740) | Rate of descent | FT / MIN | 475  | 525  | 630  | 740  | 840  |

CHANGES : EER16W added.