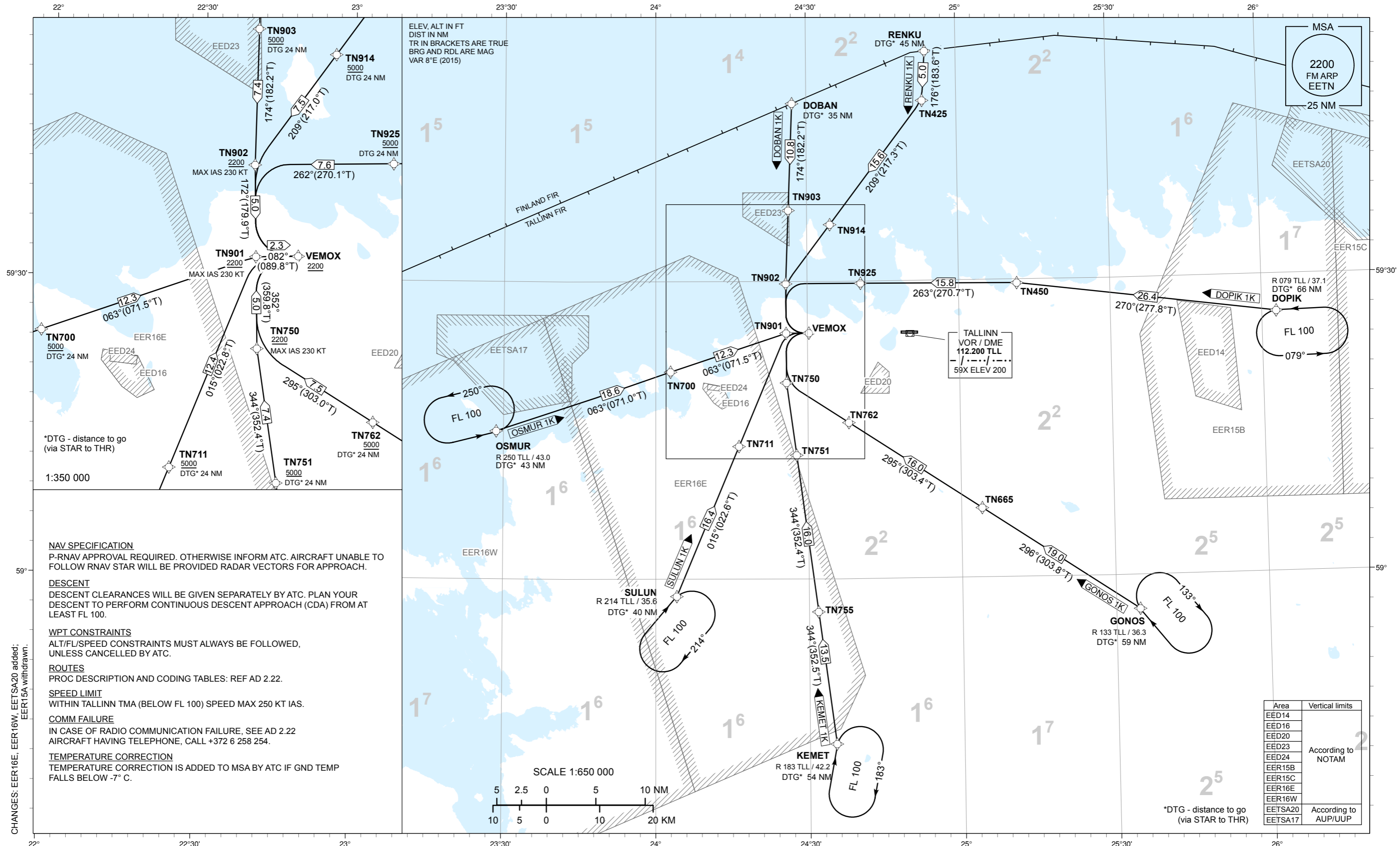


**STANDARD ARRIVAL CHART
INSTRUMENT (STAR) - ICAO**

TRANSITION ALTITUDE
5000

TOWER 135.900
RADAR 127.900
ATIS 124.875 / TEL: +372 625 8210

LENNART MERI TALLINN (EETN)
RNAV (GNSS) STAR
RWY 08
DOBAN 1K DOPIK 1K GONOS 1K
KEMET 1K OSMUR 1K RENKU 1K SULUN 1K



*DTG - distance to go
(via STAR to THR)

NAV SPECIFICATION
P-RNAV APPROVAL REQUIRED. OTHERWISE INFORM ATC. AIRCRAFT UNABLE TO FOLLOW RNAV STAR WILL BE PROVIDED RADAR VECTORS FOR APPROACH.

DESCENT
DESCENT CLEARANCES WILL BE GIVEN SEPARATELY BY ATC. PLAN YOUR DESCENT TO PERFORM CONTINUOUS DESCENT APPROACH (CDA) FROM AT LEAST FL 100.

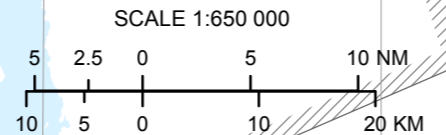
WPT CONSTRAINTS
ALT/FL/SPEED CONSTRAINTS MUST ALWAYS BE FOLLOWED, UNLESS CANCELLED BY ATC.

ROUTES
PROC DESCRIPTION AND CODING TABLES: REF AD 2.22.

SPEED LIMIT
WITHIN TALLINN TMA (BELOW FL 100) SPEED MAX 250 KT IAS.

COMM FAILURE
IN CASE OF RADIO COMMUNICATION FAILURE, SEE AD 2.22 AIRCRAFT HAVING TELEPHONE, CALL +372 6 258 254.

TEMPERATURE CORRECTION
TEMPERATURE CORRECTION IS ADDED TO MSA BY ATC IF GND TEMP FALLS BELOW -7° C.



Area	Vertical limits
EED14	According to NOTAM
EED16	
EED20	
EED23	
EED24	
EER15B	
EER15C	
EER16E	
EER16W	
EETSA20	
EETSA17	According to AUP/UUP

*DTG - distance to go
(via STAR to THR)

CHANGES: EER16E, EER16W, EETSA20 added; EER15A withdrawn.