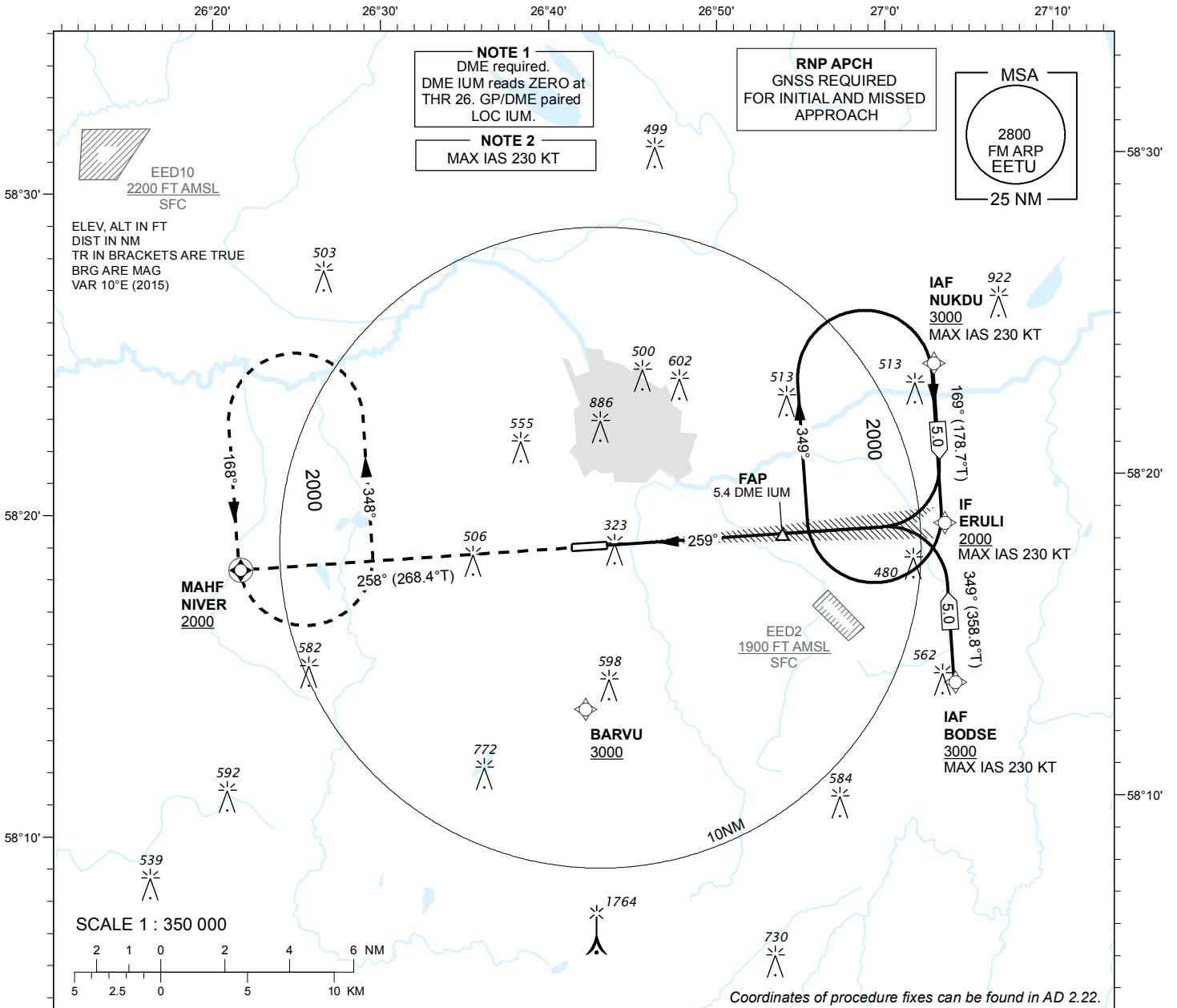


**INSTRUMENT
APPROACH
CHART - ICAO**

AD ELEV **220 FT**
HEIGHTS RELATED TO
THR RWY 26 ELEV **192 FT**

TWR 133.900
ATIS 123.125 / TEL: +372 730 9212

TARTU (EETU)
ILS Z RWY 26
(Cat A;B;C)



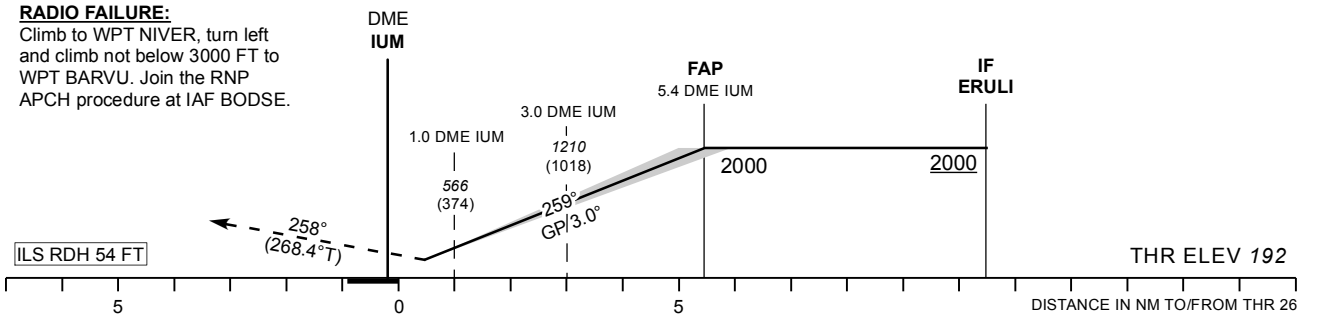
MISSED APPROACH:

Climb on track 258° to NIVER.
Enter NIVER holding climbing
to 2000 FT.

RADIO FAILURE:

Climb to WPT NIVER, turn left
and climb not below 3000 FT to
WPT BARVU. Join the RNP
APCH procedure at IAF BODSE.

TRANSITION ALT **5000**



CHANGES: new IAP

OCA (H)	A	B	C		KT	90	100	120	140	160
Straight - in Approach	417 (225)	429 (237)	437 (245)	FAP-THR 5.4 NM	MIN:SEC	3:37	3:15	2:43	2:20	2:02
Circling (S of AD only)	630 (410)	730 (510)	900 (680)	Rate of descent	FT / MIN	480	535	640	745	850