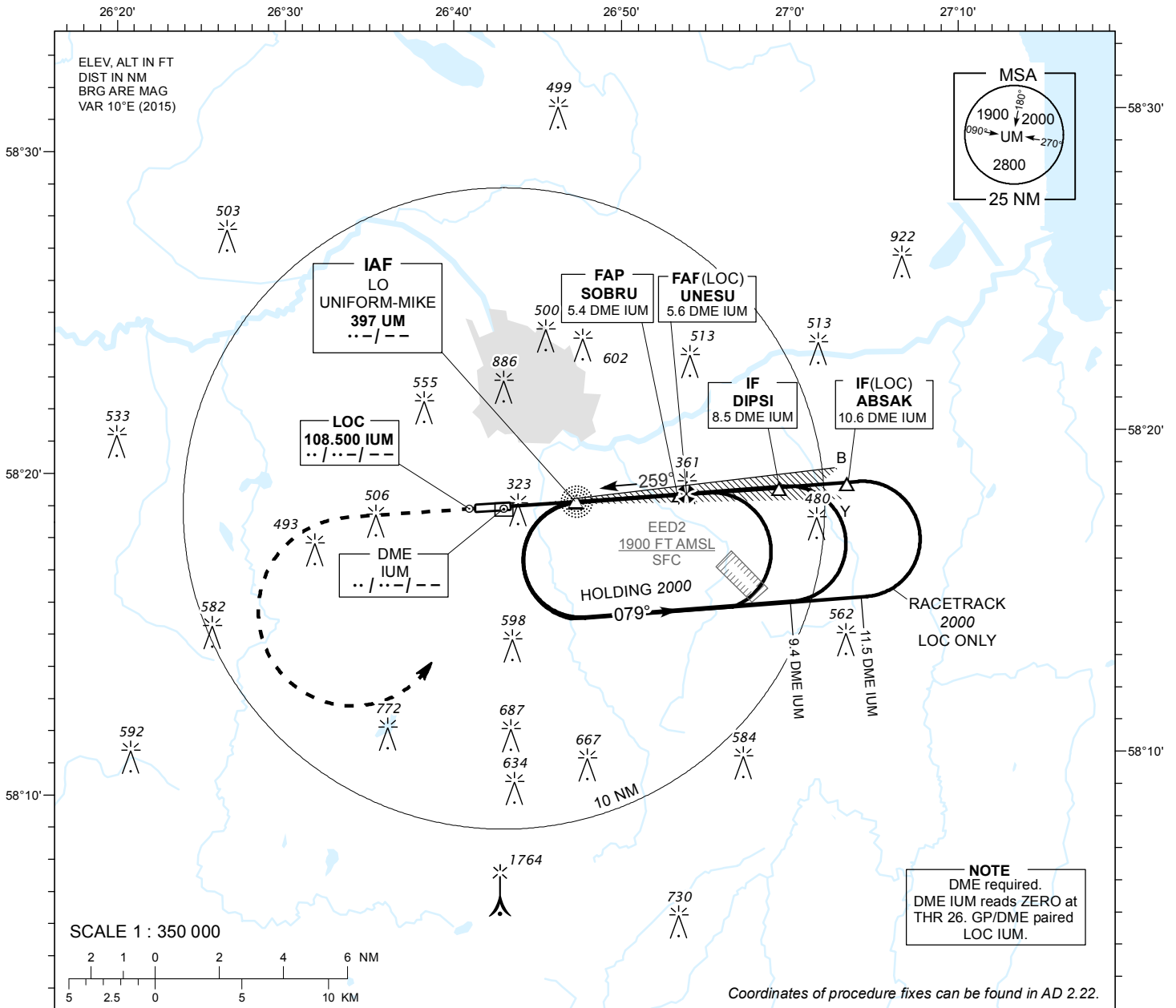


**INSTRUMENT  
APPROACH  
CHART - ICAO**

AD ELEV 220 FT  
HEIGHTS RELATED TO  
THR RWY 26 ELEV 192 FT

TWR 133.900  
ATIS 123.125 / TEL: +372 730 9212

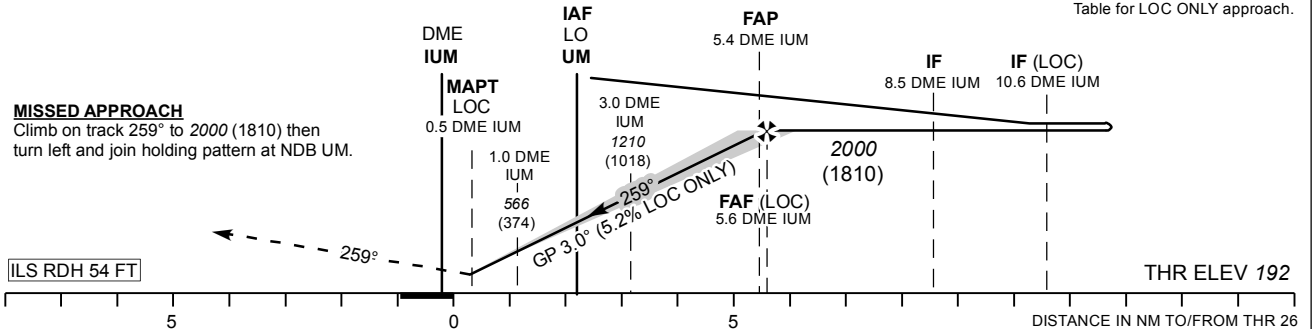
**TARTU (EETU)  
ILS Y or LOC RWY 26  
(Cat A;B;C)**



TRANSITION ALT 5000

DME IUM	DME 2	DME 3	DME 4	DME 5
ALT	880	1200	1520	1800
HGT	(690)	(1010)	(1330)	(1610)

Table for LOC ONLY approach.



CHANGES: new IAC name.

OCA (H)		A	B	C	Timing not authorized for defining the MAPT.						
Straight-in Approach	CAT I	404 (212)	416 (224)	424 (232)	GS	KT	90	100	120	140	160
	LOC ONLY	540 (350)			FAF-MAPT 5.1 NM	MIN:SEC	3:24	3:04	2:33	2:11	1:55
Circling (S of AD only)		630 (410)	730 (510)	900 (680)	Rate of descent	FT / MIN	475	530	635	740	850