

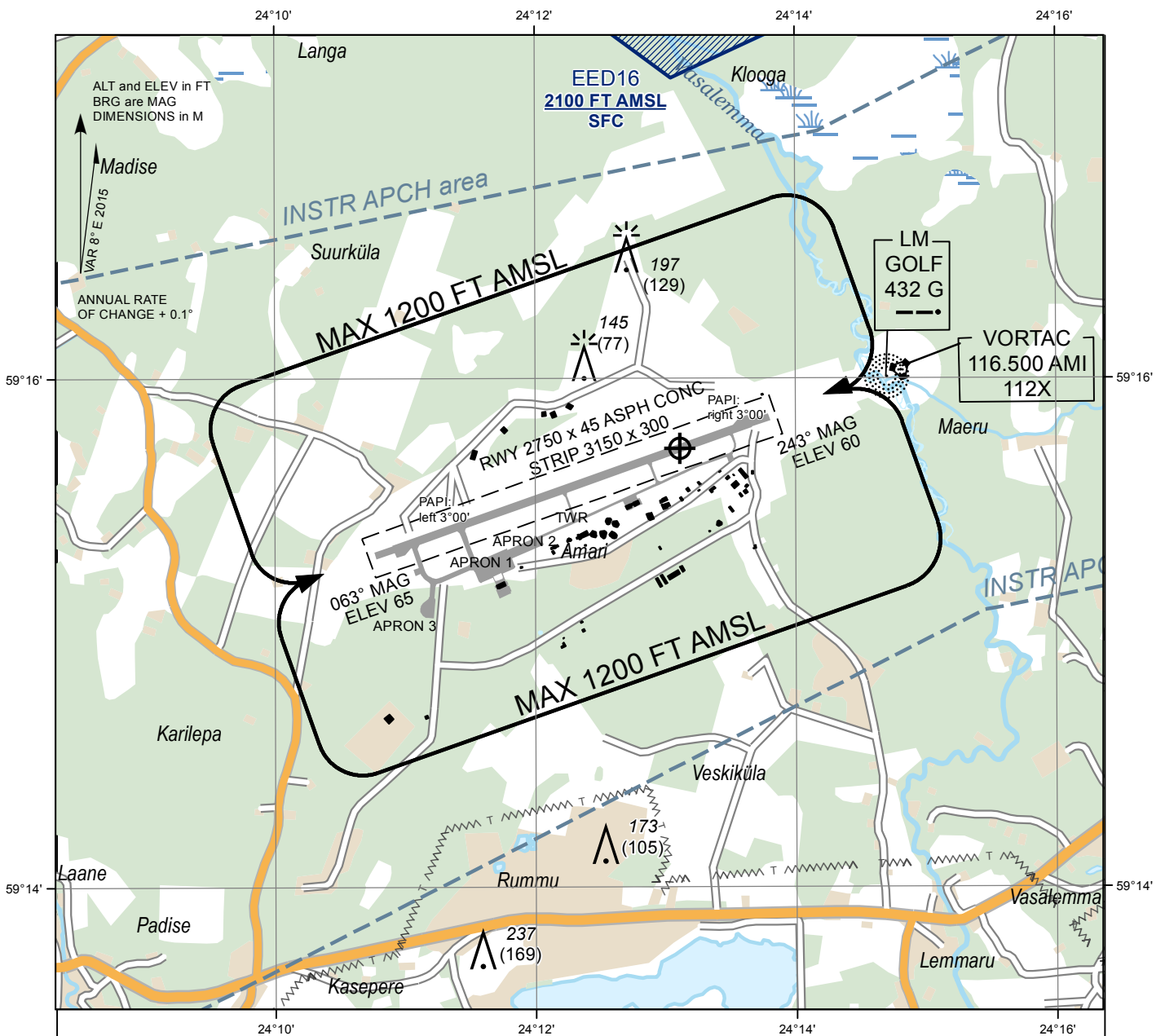
**LANDING
CHART**

59°15'44''N
024°13'07''E

ELEV 68 FT
HEIGHTS RELATED
TO AD ELEV

ÄMARI TWR 122.100
ÄMARI TWR 257.800
ATIS 123.880

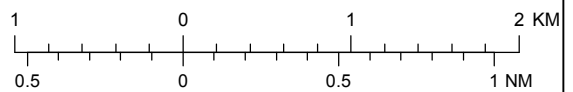
**ÄMARI
MILITARY AERODROME**



AERODROME LIGHTING

PALS-I: **RWY 06** 900 M; LIH
RWY 24 900 M; LIH
REDL: **RWY 06/24** 2750 M, 60 M, W;
last 600 M, Y; LIH
RCLL: **RWY 06/24** 2750 M, 30 M, W;
FM 2150 M - 2450 M, R/W;
FM 2450 M, R; LIH
PAPI: **RWY 06** left 3°00'
RWY 24 right 3°00'
THR: **RWY 06/24** G; LIH
RENL: **RWY 06/24** R; LIH
TDZ: **RWY 06** NIL
RWY 24 NIL
STWL: **RWY 06/24** 150 M, R;
TWY: A, B, C, D, E, H; EDGE
CL - NIL
OBST: R; LIL

SCALE 1:45 000



GROUND SERVICES*

CUST, IMG
MET
Fuel: AVGAS 100LL (NATO F-18),
JET A-1 (NATO F-35)
* Operational hours: see AIP, EEEI AD 2.3

LDA RWY 06 2750 M
LDA RWY 24 2750 M

INFORMATION TEL: +372 717 3185

Topography © Estonian Land Board

CHANGES: TWR and ATIS FREQ.