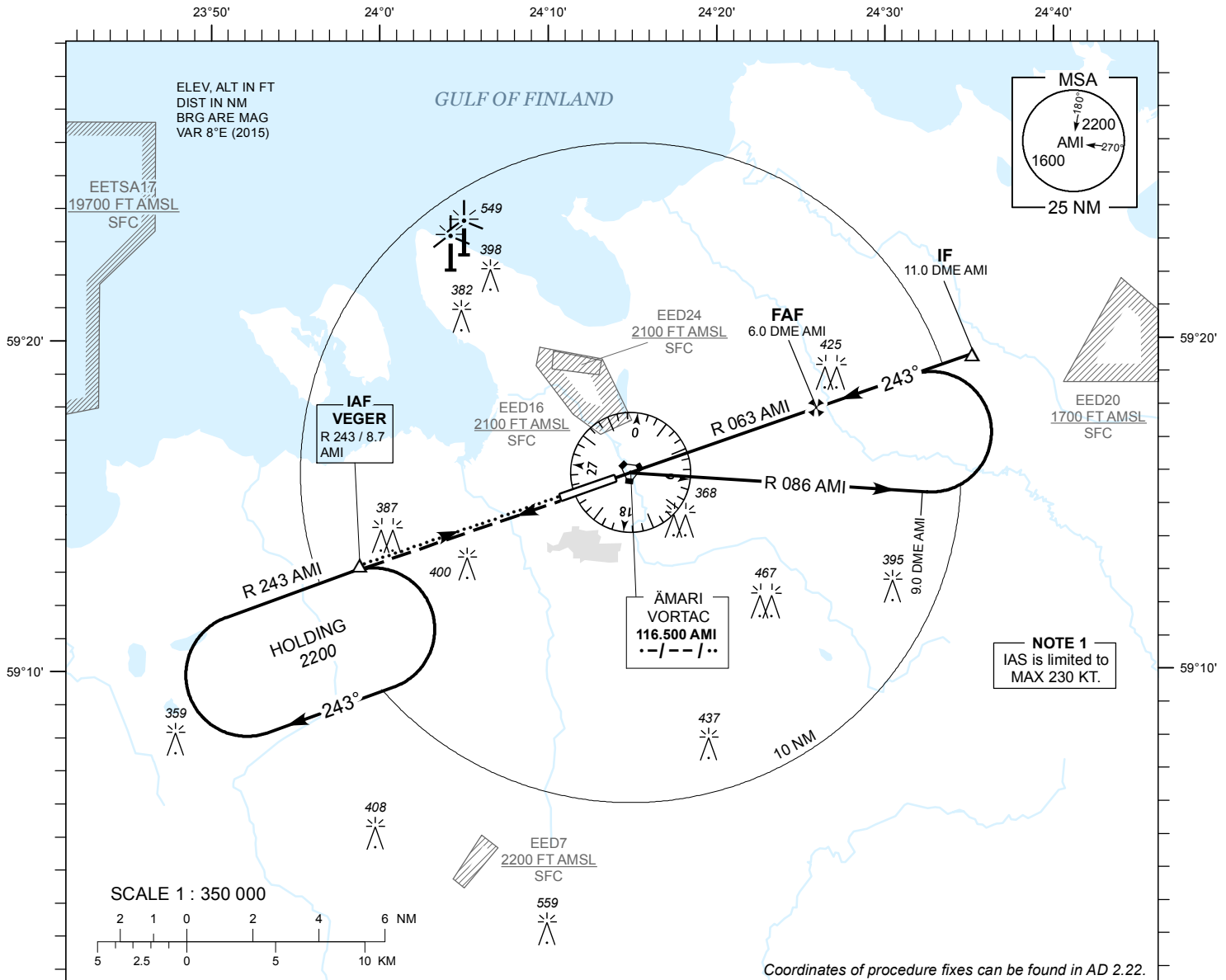


**INSTRUMENT  
APPROACH  
CHART - ICAO**

AD ELEV 68 FT  
HEIGHTS RELATED TO  
THR RWY 24 ELEV 60 FT

TALLINN RADAR 127.900  
ÄMARI TOWER 122.100 / 257.800

**ÄMARI (EEEI)  
MILITARY AERODROME  
VORTAC RWY 24  
(CAT C;D;E)**



**MISSED APPROACH**

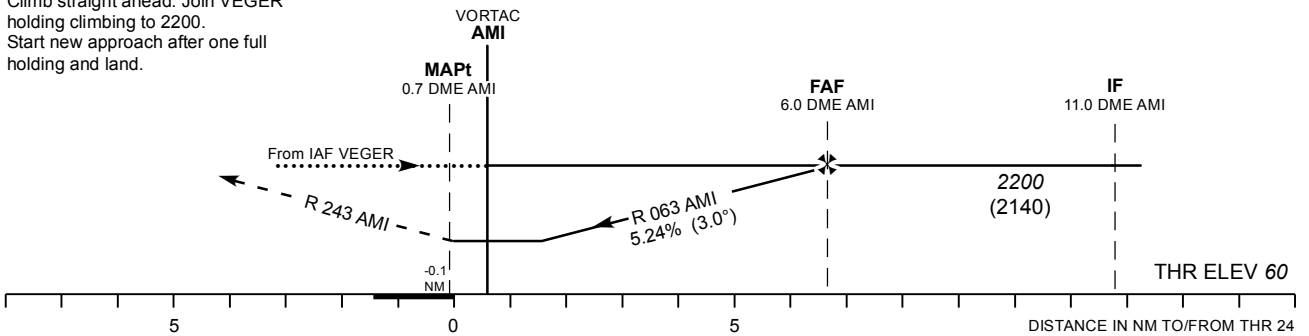
Climb on track 243 to 2200 and expect radar vectors. Contact TALLINN RADAR FREQ 127.9 MHz.

TRANSITION ALT 5000

TACAN AMI	2 NM	3 NM	4 NM	5 NM
ALT	970	1290	1540	1920
HGT	(910)	(1230)	(1480)	(1860)

**COMMUNICATION FAILURE**

Climb straight ahead. Join VEGER holding climbing to 2200. Start new approach after one full holding and land.



CHANGES: TWR FREQ.

OCA (H)	C	D	E	KT	100	120	140	160	180	200	220
Straight - in - Approach	430 (370)	450 (390)		FAF- MAPt 6.7 NM	MIN : SEC	4:02	3:21	2:52	2:31	2:14	2:01
Circling	800 (730)		970 (900)	Rate of descent	FT / MIN	535	640	745	845	960	1065