

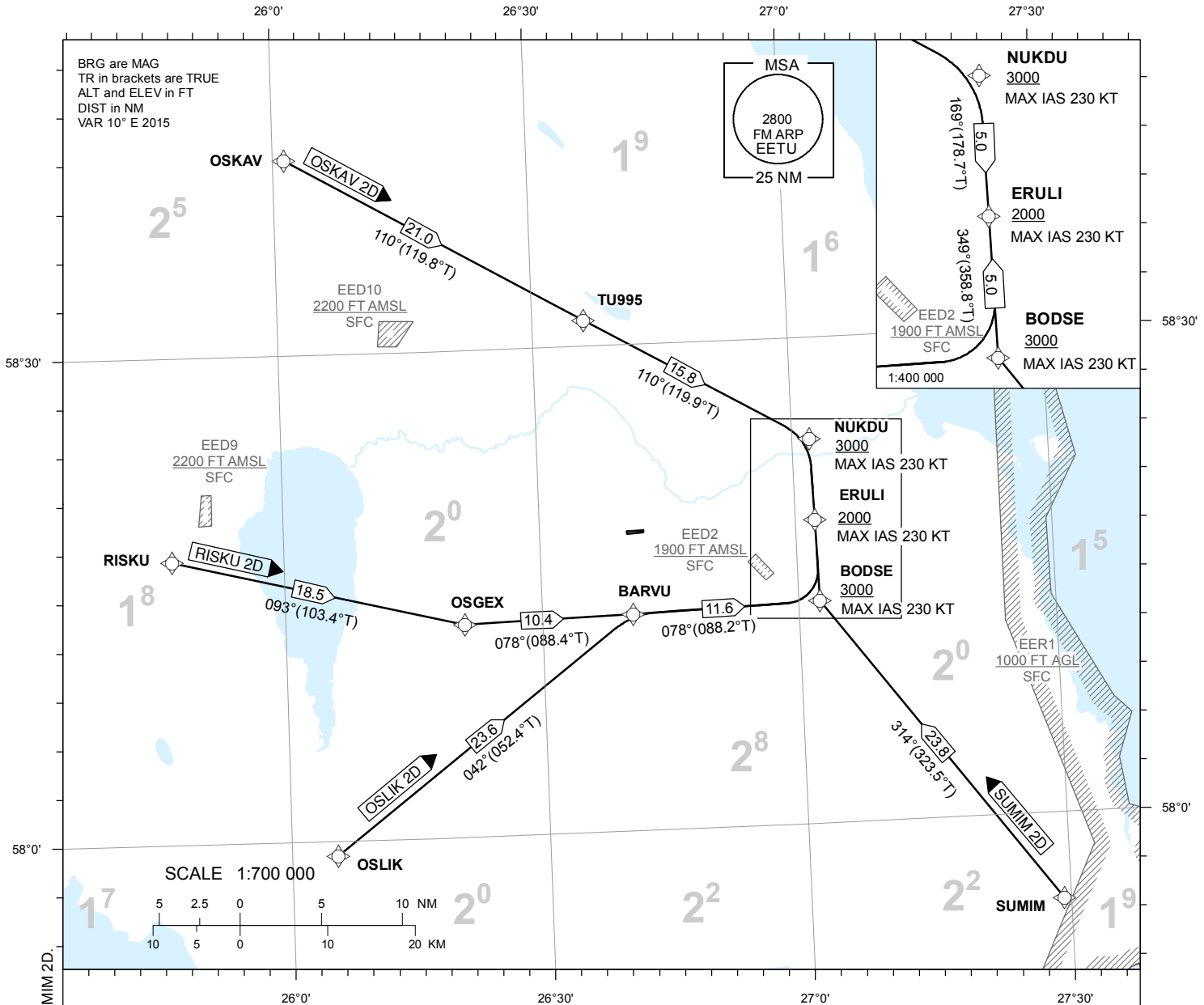
**STANDARD ARRIVAL CHART  
INSTRUMENT (STAR) - ICAO**

TRANSITION ALTITUDE  
5000

TWR 133.900  
ATIS 123.125 / TEL: +372 730 9212

**TARTU (EETU)**  
RNAV (GNSS) STAR  
RWY 26

OSKAV 2D OSLIK 2D  
RISKU 2D SUMIM 2D



CHANGES: new WP names NUKDU, BODSE and OSGEX;  
new STAR designators OSKAV 2D, RISKU 2D, OSLIK 2D and SUMIM 2D.

**NAV SPECIFICATION**

P-RNAV APPROVAL REQUIRED. OTHERWISE INFORM ATC.

**DME/DME OPS**

NOT SUPPORTED.

**DESCENT**

DESCENT CLEARANCES WILL BE GIVEN SEPARATELY BY ATC. IF TRAFFIC PERMITS, PLAN CONTINUOUS DESCENT ARRIVAL (CDA) ACCORDING TO STAR.

**WPT CONSTRAINTS**

ALT/FL/ SPEED CONSTRAINTS MUST ALWAYS BE FOLLOWED AS PUBLISHED UNLESS CNL BY ATC.

**ROUTES**

CODING TABLES AND WPT LIST: REF AD 2.22.

**RADIO COMMUNICATION FAILURE**

IN CASE OF RADIO COMMUNICATION FAILURE SEE AD 2.22.

**CONTINGENCY PROCEDURE**

LOSS OF RNAV CAPABILITY INFORM ATC TO GET ALTERNATIVE CLEARANCE.

**TEMPERATURE CORRECTION**

AIRCRAFT SHALL INFORM ATC IF USING TEMPERATURE CORRECTED ALTITUDE.