

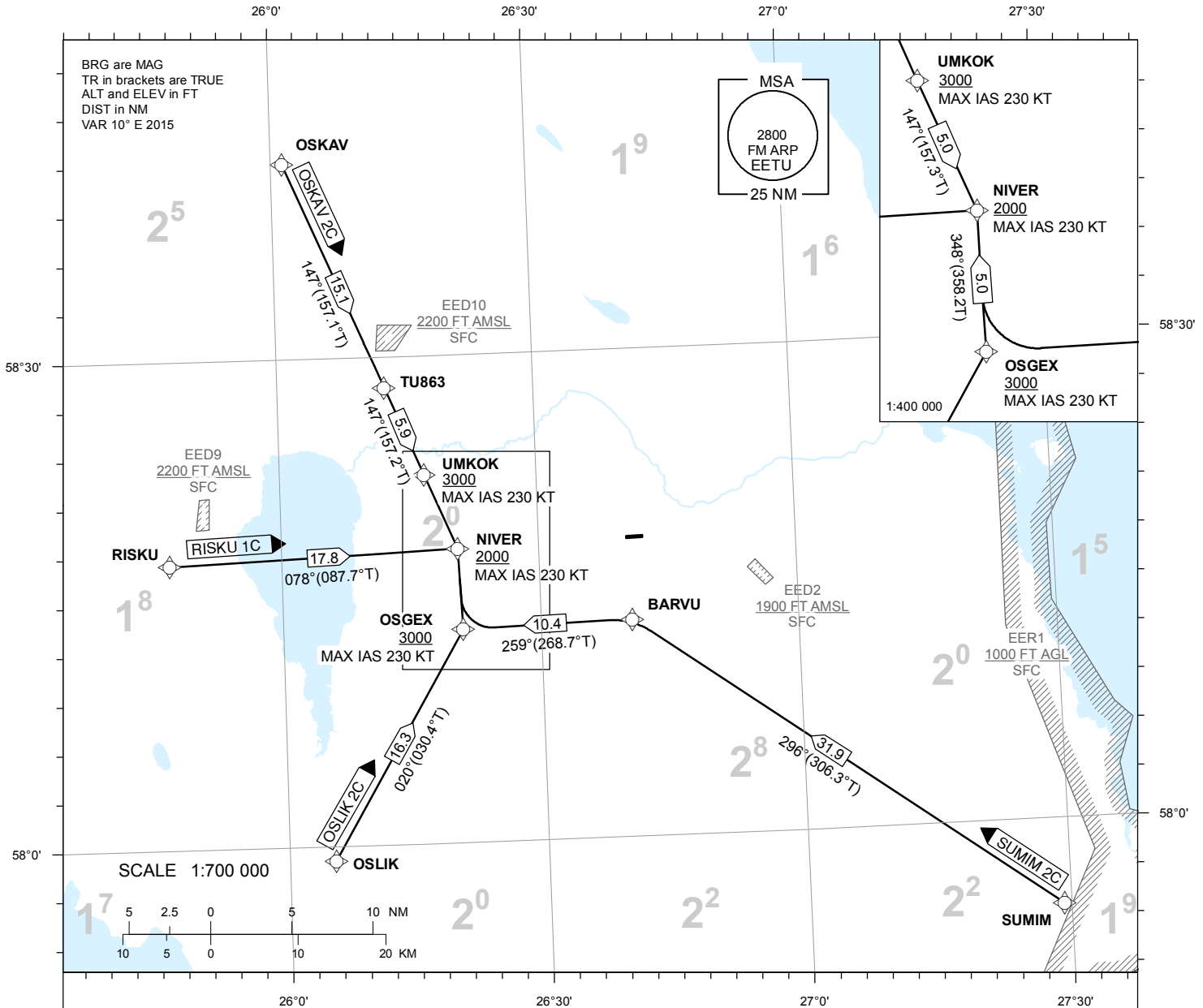
**STANDARD ARRIVAL CHART  
INSTRUMENT (STAR) - ICAO**

TRANSITION ALTITUDE  
5000

TWR 133.900  
ATIS 123.125 / TEL: +372 730 9212

**TARTU (EETU)**  
**RNAV (GNSS) STAR**  
**RWY 08**

OSKAV 2C OSLIK 2C  
RISKU 1C SUMIM 2C



CHANGES: new WP names UMKOK and OSKEX;  
new STAR designators OSKAV 2C, OSLIK 2C and SUMIM 2C.

**NAV SPECIFICATION**

P-RNAV APPROVAL REQUIRED. OTHERWISE INFORM ATC.

**DME/DME OPS**

NOT SUPPORTED.

**DESCENT**

DESCENT CLEARANCES WILL BE GIVEN SEPARATELY BY ATC. IF TRAFFIC PERMITS, PLAN CONTINUOUS DESCENT ARRIVAL (CDA) ACCORDING TO STAR.

**WPT CONSTRAINTS**

ALT/FL/ SPEED CONSTRAINTS MUST ALWAYS BE FOLLOWED AS PUBLISHED UNLESS CNL BY ATC.

**ROUTES**

CODING TABLES AND WPT LIST: REF AD 2.22.

**RADIO COMMUNICATION FAILURE**

IN CASE OF RADIO COMMUNICATION FAILURE SEE AD 2.22.

**CONTINGENCY PROCEDURE**

LOSS OF RNAV CAPABILITY INFORM ATC TO GET ALTERNATIVE CLEARANCE.

**TEMPERATURE CORRECTION**

AIRCRAFT SHALL INFORM ATC IF USING TEMPERATURE CORRECTED ALTITUDE.