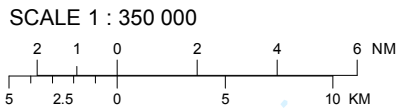
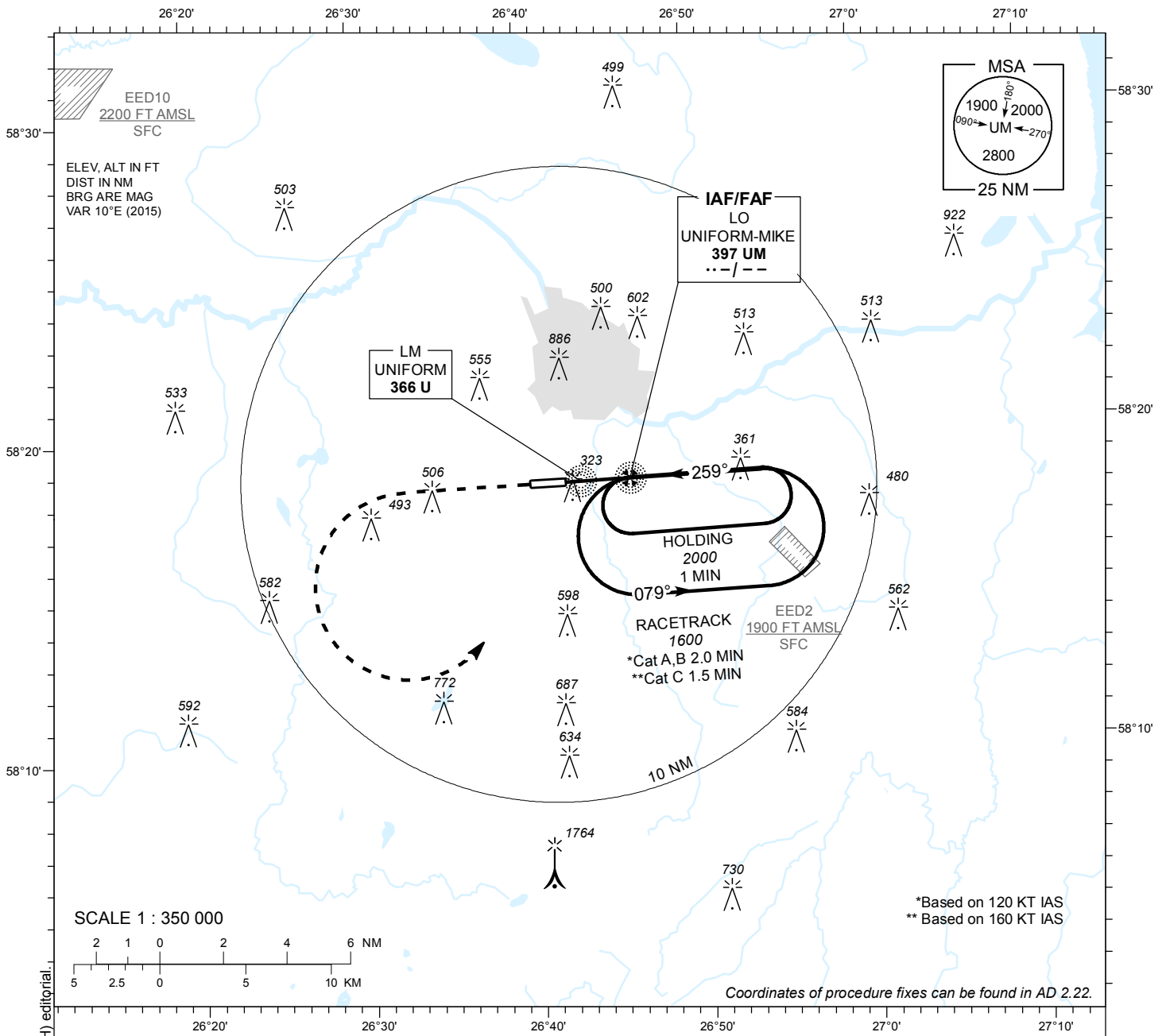


**INSTRUMENT  
APPROACH  
CHART - ICAO**

AD ELEV 220 FT  
HEIGHTS RELATED TO  
THR RWY 26 ELEV 192 FT

TWR 133.900  
ATIS 123.125 / TEL: +372 730 9212

**TARTU (EETU)**  
**NDB RWY 26**  
(Cat A;B;C)

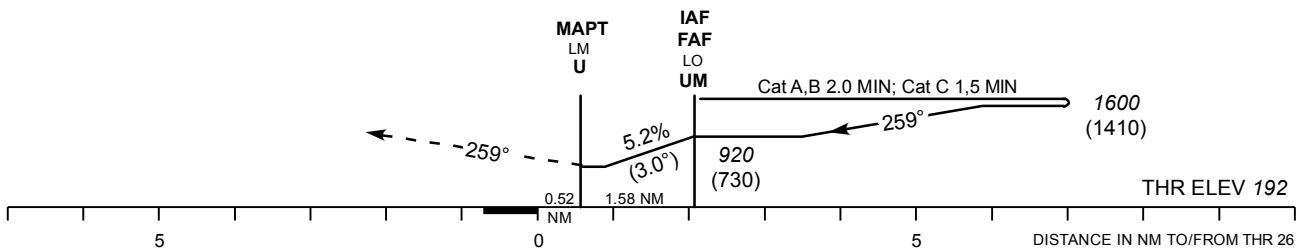


\*Based on 120 KT IAS  
\*\* Based on 160 KT IAS

Coordinates of procedure fixes can be found in AD 2.22.

**MISSED APPROACH**  
Climb on track 259° to 2000 (1810).  
Turn left to LO 397 UM to join holding  
pattern.

TRANSITION ALT 5000



Timing not authorized for defining the MAPt.

OCA (H)	A	B	C		KT	90	100	120	140	160
Straight-in Approach	580 (390)			FAF-MAPt 1.58 NM	MIN:SEC	1:03	0:57	0:47	0:41	0:36
Circling (S of AD only)	630 (410)	730 (510)	900 (680)	Rate of descent	FT / MIN	475	530	635	740	845

CHANGES : AD elevation, obstacle elevations, Cat.B, C circling OCA(H) editorial.