

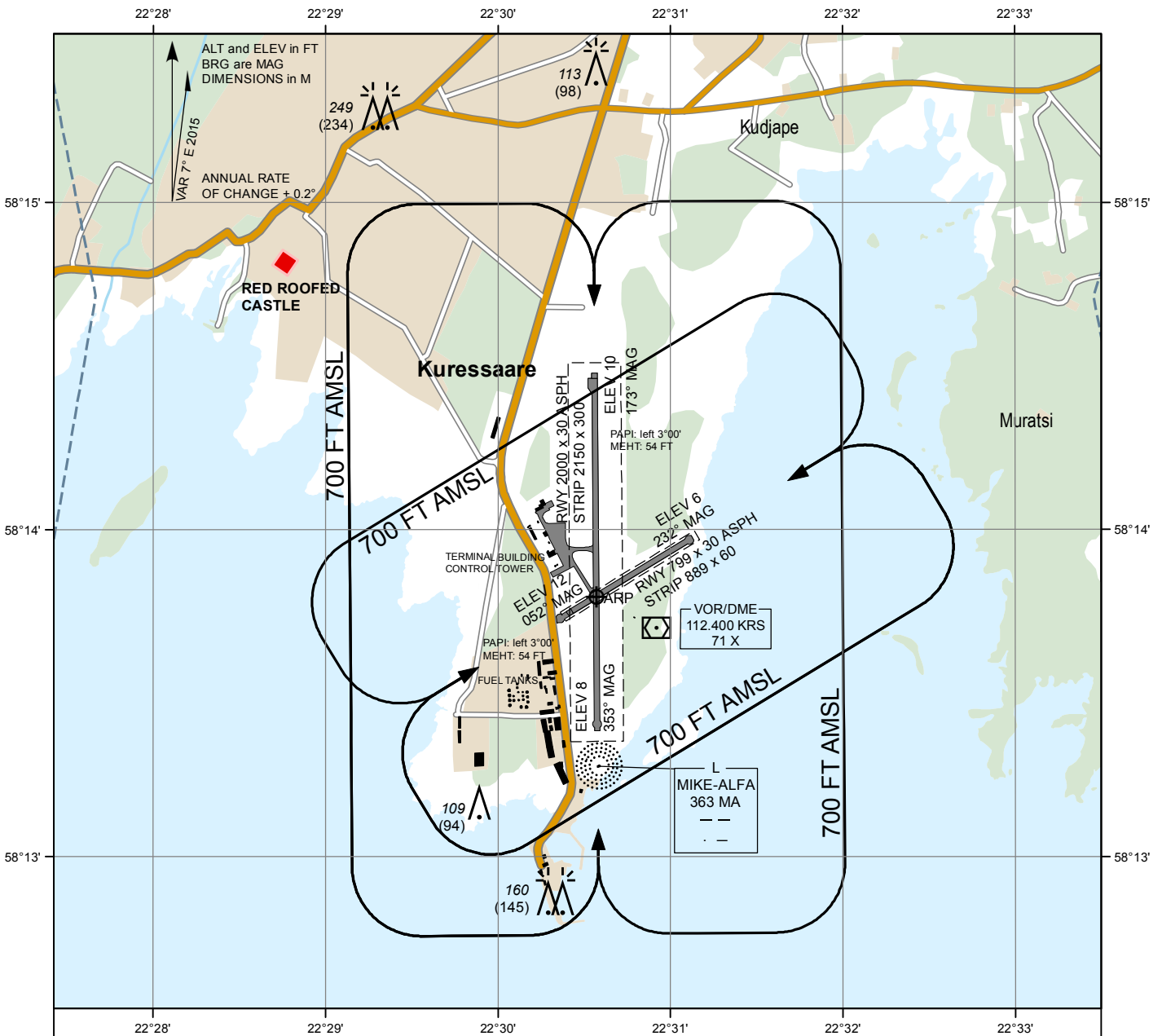
**LANDING  
CHART**

58°13'48''N  
022°30'34''E

**ELEV 15 FT**  
HEIGHTS RELATED  
TO AD ELEV

INFORMATION 118.050

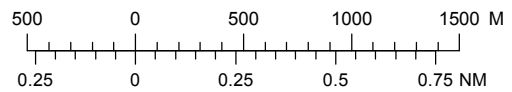
**KURESSAARE**



**AERODROME LIGHTING**

PALS-I: RWY 17	720 M; LIH
ALS: RWY 35	180 M; LIH
REDL: RWY 17	2000 M, 60 M, W; last 600 M, Y; LIH
RWY 35	2000 M, 60 M, W; last 600 M, Y; LIH
RWY 05/23	NIL
PAPI: RWY 17/35	left 3°00'
THR: RWY 17/35	G; LIH
RWY 05/23	NIL
RENL: RWY 17/35	R; LIH
RWY 05/23	NIL
TWY: EDGE	B; LIL
OBST: A/B	R; LIL

**SCALE 1:35 000**



**GROUND SERVICES\***

CUST, IMG  
MET  
Fuel: JET A1, 100LL  
\* Operational hours: see AIP, EEKE AD 2.3

LDA RWY 17	2000 M
LDA RWY 35	2000 M
LDA RWY 05	799 M
LDA RWY 23	799 M

Topography © Estonian Land Board

CHANGES: AD, THR 05, THR 23 and obstacle elevations. editorial.