

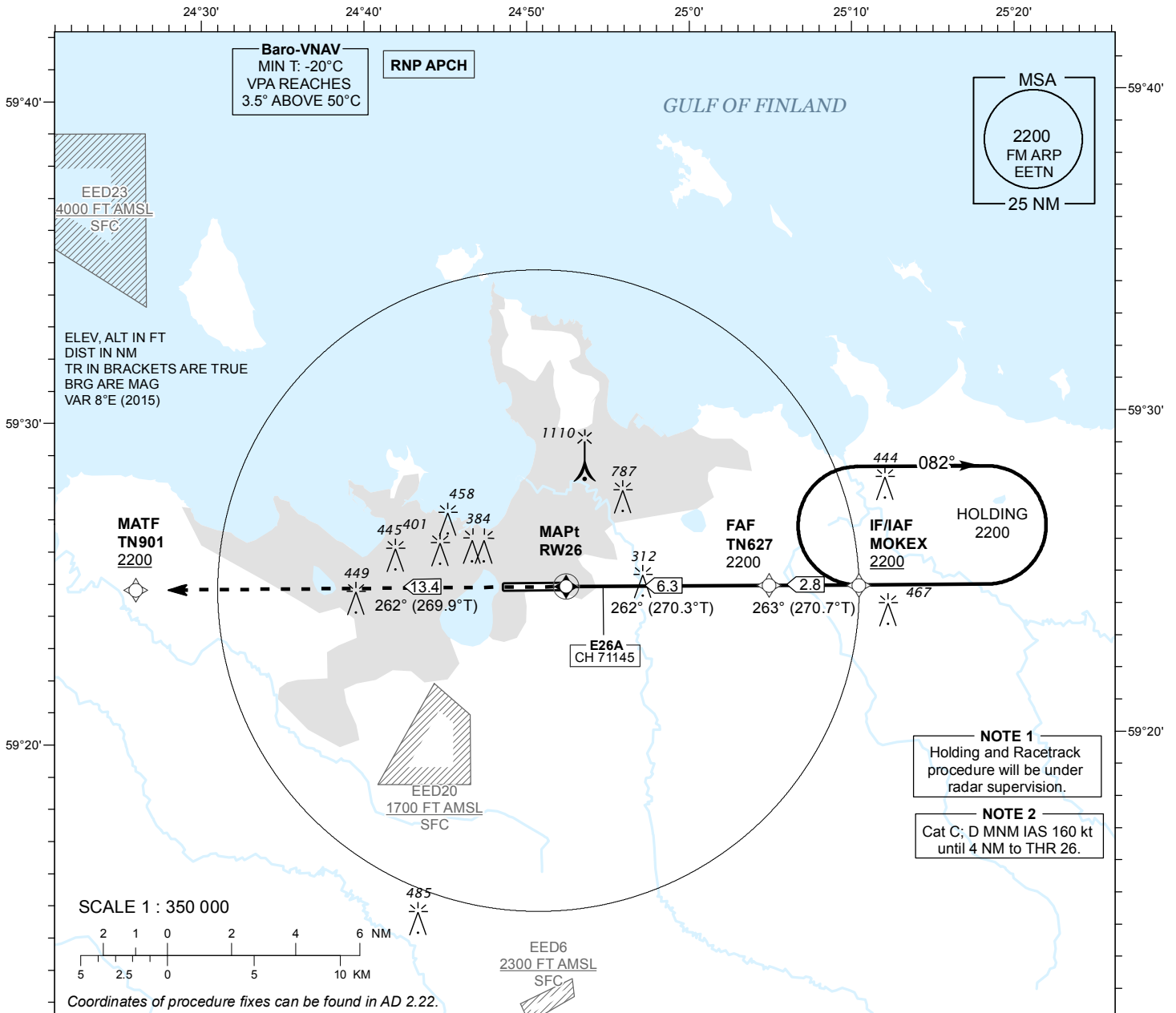
**INSTRUMENT
APPROACH
CHART - ICAO**

**SBAS
CH 71145
E26A**

**AD ELEV 135 FT
HEIGHTS RELATED TO
THR RWY 26 ELEV 135 FT**

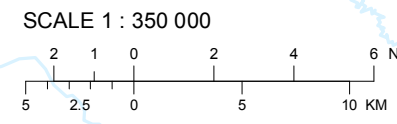
**RADAR 127.900
TOWER 135.900
ATIS 124.875 / TEL: +372 625 8210**

**LENNART MERI
TALLINN (EETN)
RNAV (GNSS) RWY 26**



NOTE 1
Holding and Racetrack procedure will be under radar supervision.

NOTE 2
Cat C; D MNM IAS 160 kt until 4 NM to THR 26.

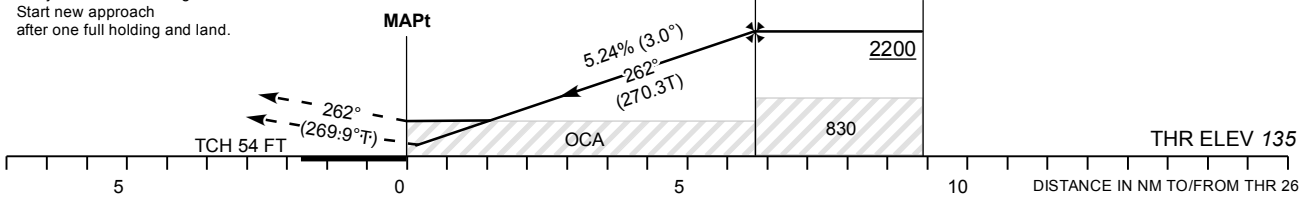


Coordinates of procedure fixes can be found in AD 2.22.

TRANSITION ALT 5000

MISSED APPROACH
Climb to TN901 and contact radar
FREQ 127.9 MHZ.

RADIO FAILURE
After reaching TN901 turn right
and join MOKEX holding.
Start new approach
after one full holding and land.



Timing not authorized for defining the MAPt.

OCA (H)	A	B	C	D	Final Approach DIST						
					2.0 NM	3.0 NM	4.0 NM	5.0 NM	6.0 NM		
LPV Cat I	338 (203)	350 (215)	358 (223)	368 (233)	ELEV	820	1140	1460	1780	2100	
LNAV (VNAV)	350 (220)	360 (230)	450 (320)	460 (330)	HGT	680	1000	1320	1640	1960	
LNAV	560 (430)				FAF-MAPt 6.3 NM	KT	90	100	120	140	160
Circling (S of AD only)	1360 (1230)		1510 (1380)		Rate of descent	FT / MIN	475	530	635	740	850