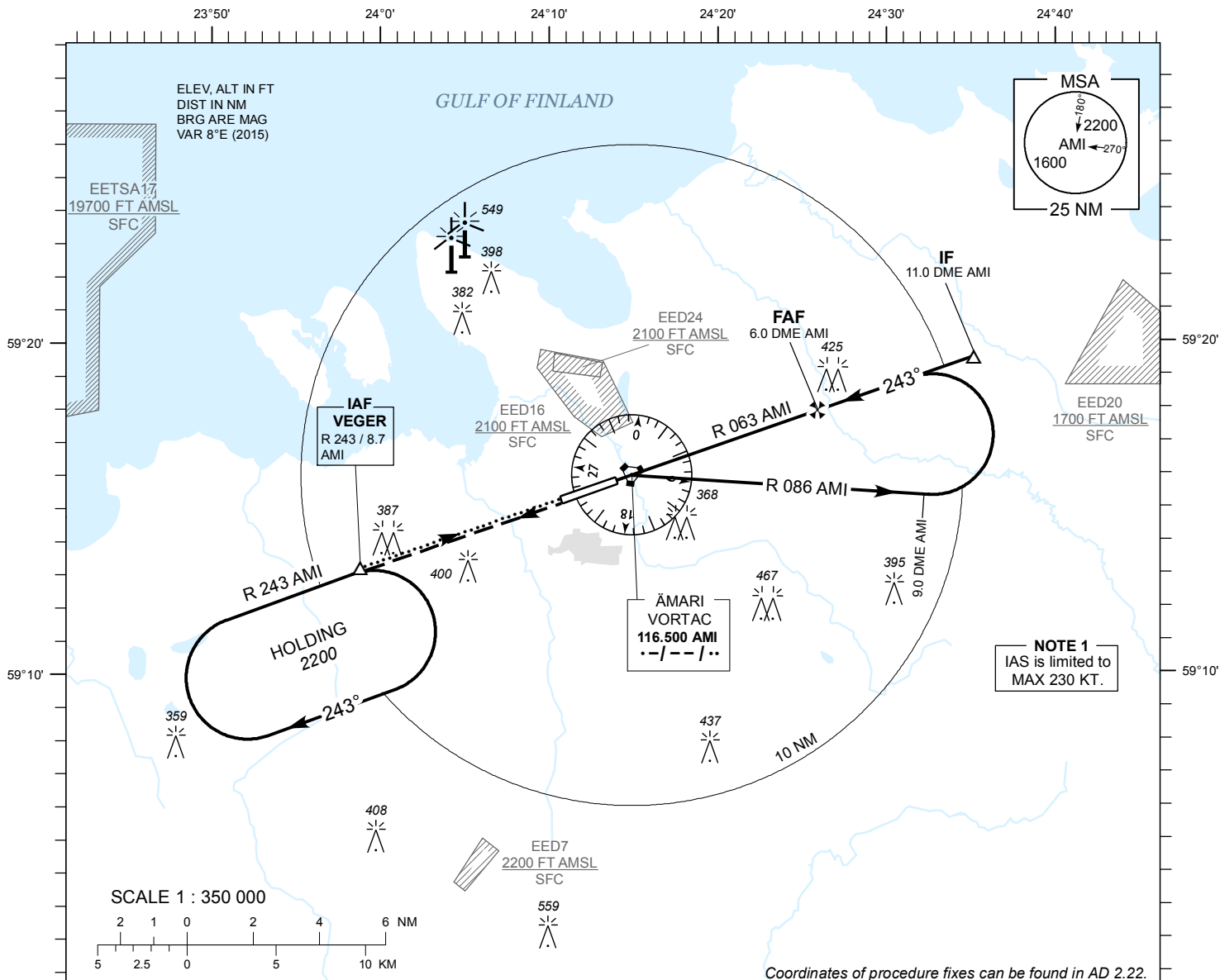


**INSTRUMENT
APPROACH
CHART - ICAO**

AD ELEV 68 FT
HEIGHTS RELATED TO
THR RWY 24 ELEV 60 FT

TALLINN RADAR 127.900
ÄMARI TOWER 120.900 / 257.800

**ÄMARI (EEEE)
MILITARY AERODROME
VORTAC RWY 24
(CAT C;D;E)**



MISSED APPROACH

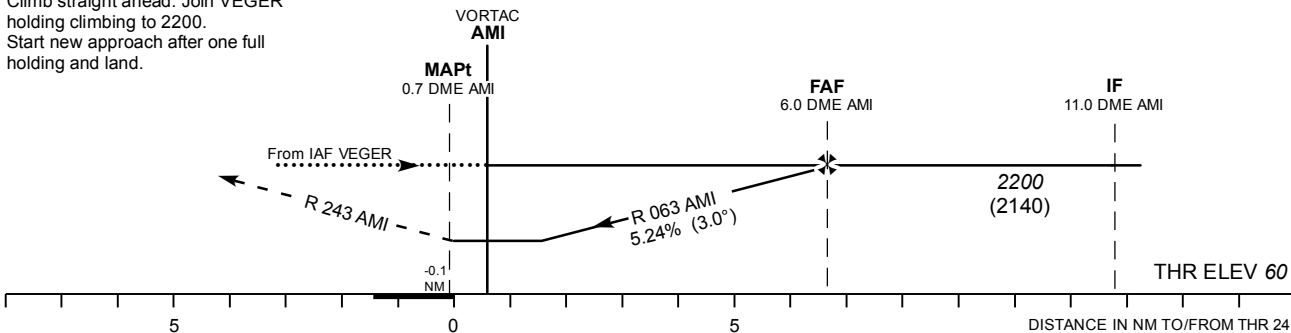
Climb on track 243 to 2200 and expect radar vectors. Contact TALLINN RADAR FREQ 127.9 MHz.

TRANSITION ALT 5000

TACAN AMI	2 NM	3 NM	4 NM	5 NM
ALT	970	1290	1540	1920
HGT	(910)	(1230)	(1480)	(1860)

COMMUNICATION FAILURE

Climb straight ahead. Join VEGER holding climbing to 2200. Start new approach after one full holding and land.



Timing not authorized for defining the MAPt.

OCA (H)	C	D	E	KT	100	120	140	160	180	200	220	
Straight - in - Approach	430 (370)	450 (390)		FAF- MAPt 6.7 NM	MIN : SEC	4:02	3:21	2:52	2:31	2:14	2:01	1:50
Circling	800 (730)		970 (900)	Rate of descent	FT / MIN	535	640	745	845	960	1065	1170

CHANGES : EETS17 added.