

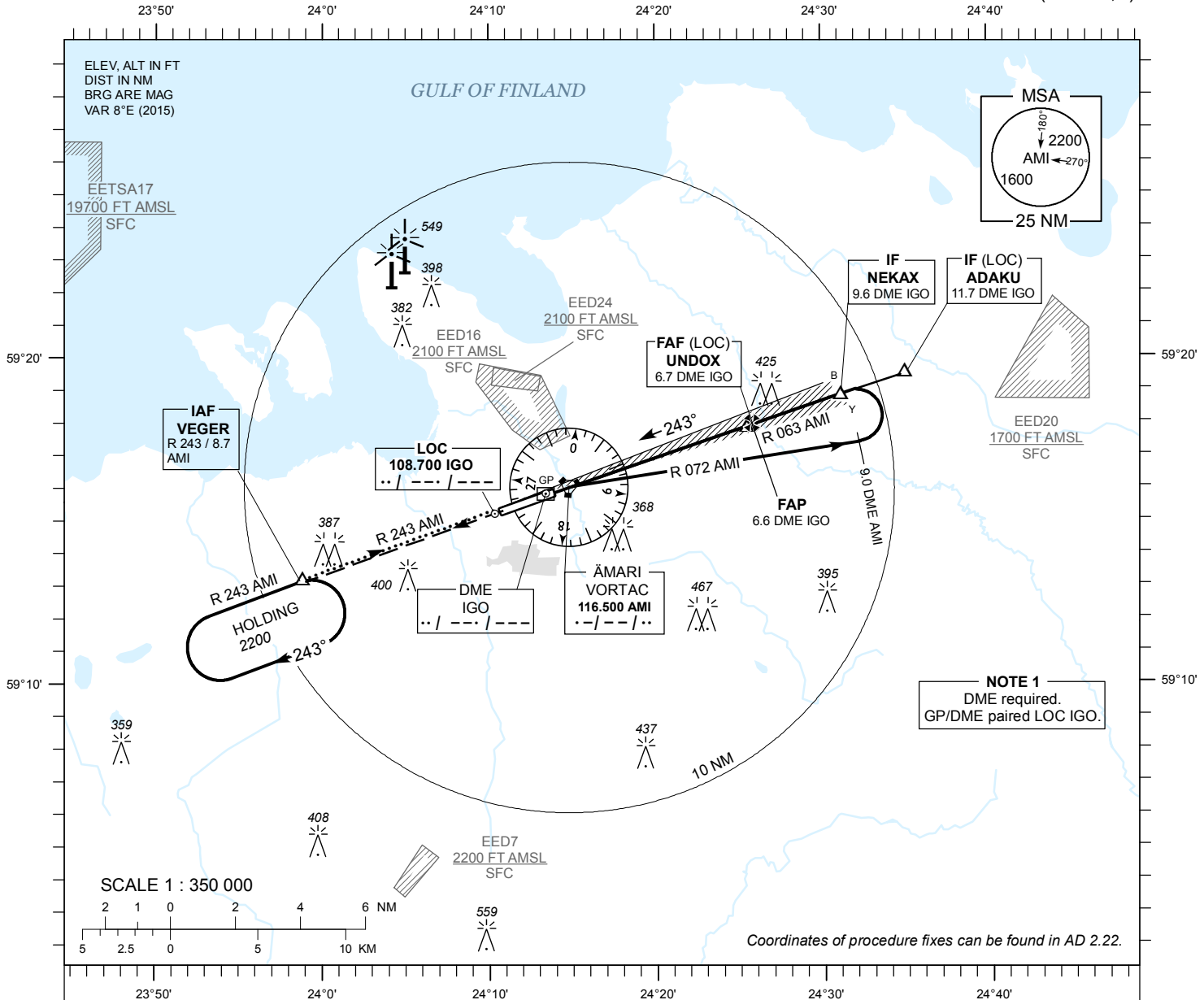
**INSTRUMENT
APPROACH
CHART - ICAO**

AD ELEV **68 FT**
HEIGHTS RELATED TO
THR RWY 24 ELEV **60 FT**

TALLINN RADAR 127.900
ÄMARI TOWER 120.900 / 257.800

**ÄMARI (EEEI)
MILITARY AERODROME**

ILS or LOC RWY 24
(CAT A;B)



MISSED APPROACH

Climb on track 243 to 2200 and expect radar vectors. Contact TALLINN RADAR FREQ 127.9 MHz.

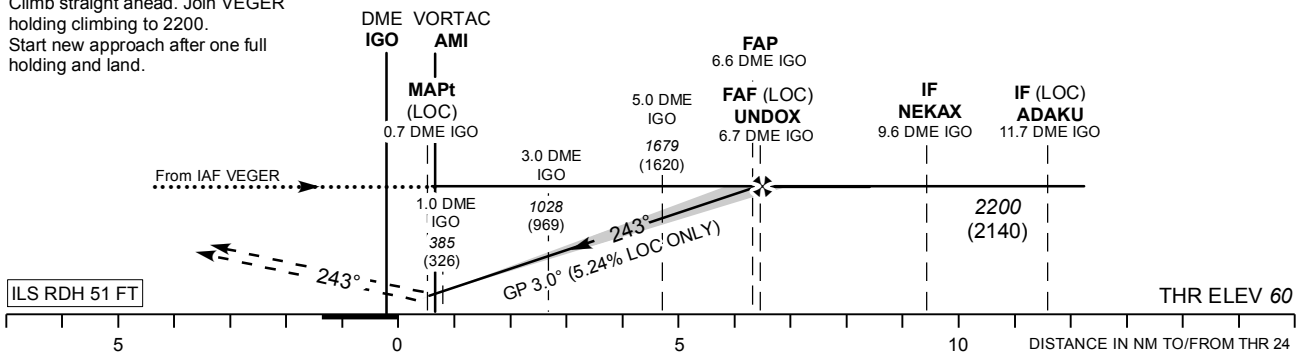
COMMUNICATION FAILURE

Climb straight ahead. Join VEGER holding climbing to 2200. Start new approach after one full holding and land.

TRANSITION ALT **5000**

DME IGO	1 NM	2 NM	3 NM	4 NM	5 NM	6 NM
ALT	390	700	1020	1340	1660	1980
HGT	(330)	(650)	(960)	(1280)	(1600)	(1920)

Table for LOC ONLY approach.



Timing not authorized for defining the MAPt.

OCA (H)		A	B	LOC ONLY					KT	80	90	100	120	140
Straight-in Approach	CAT I	298 (238)	310 (250)	FAF- MAPt 6.0 NM					MIN : SEC	4:30	4:00	3:36	3:00	2:34
	LOC ONLY	380 (320)		Rate of descent					FT / MIN	425	480	535	640	745
Circling		500 (430)	660 (590)											

CHANGES: EETS17 added.