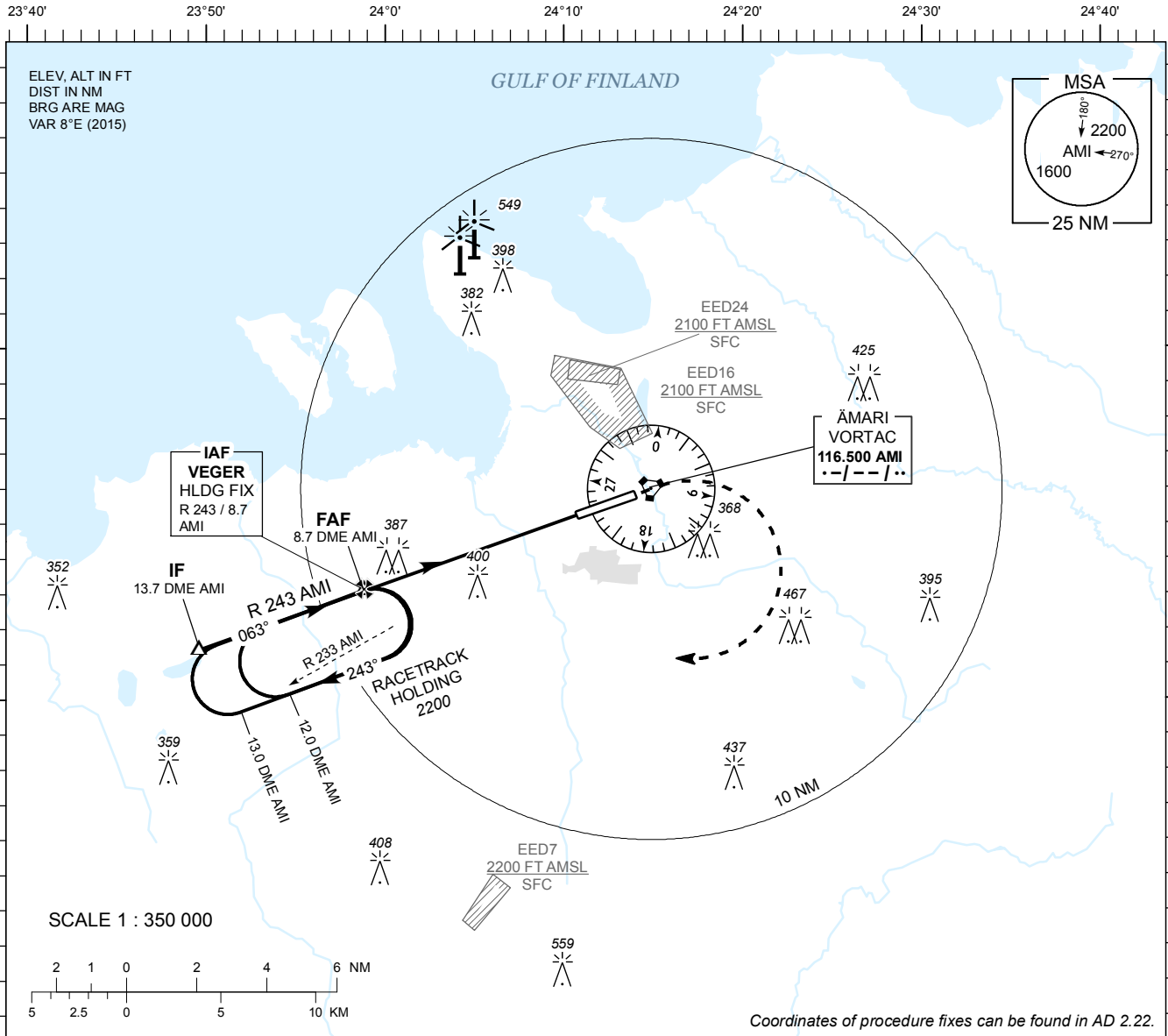


**INSTRUMENT  
APPROACH  
CHART - ICAO**

AD ELEV **68 FT**  
HEIGHTS RELATED TO  
THR RWY 06 ELEV **65 FT**

TALLINN RADAR 127.900  
ÄMARI TOWER 120.900 / 257.800

**ÄMARI (EEEE)  
MILITARY AERODROME  
VORTAC RWY 06  
(CAT A;B)**



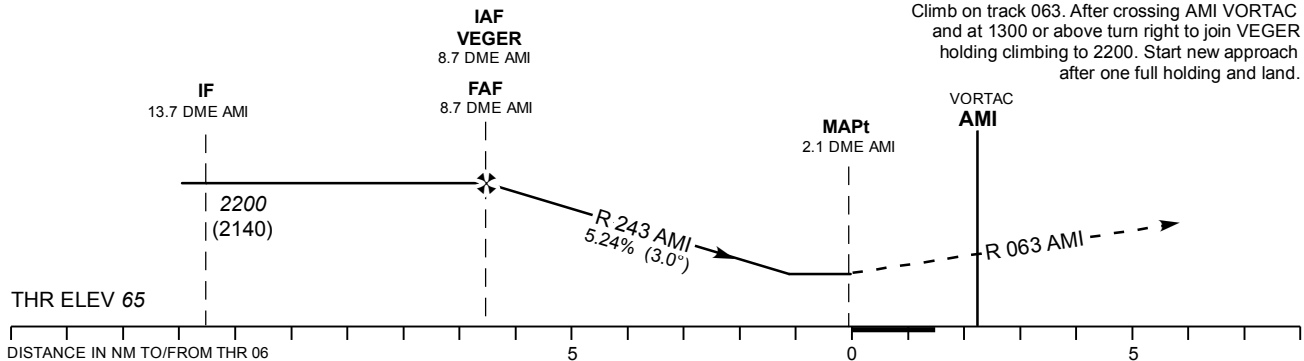
Coordinates of procedure fixes can be found in AD 2.22.

TACAN AMI	8 NM	7 NM	6 NM	5 NM	4 NM
ALT	1980	1670	1350	1030	720
HGT	(1920)	(1610)	(1290)	(970)	(660)

TRANSITION ALT 5000

**MISSED APPROACH**  
Climb on track 063. After crossing AMI VORTAC and at 1300 or above turn right heading 160 climbing to 2200. Contact TALLINN RADAR FREQ 127.9 MHz.

**COMMUNICATION FAILURE**  
Climb on track 063. After crossing AMI VORTAC and at 1300 or above turn right to join VEGER holding climbing to 2200. Start new approach after one full holding and land.



	OCA (H)	A	B	KT	80	90	100	120	140
Straight - in Approach	640 (580)		FAF- THR 6.6 NM	MIN : SEC	4:57	4:24	3:58	3:18	2:50
Circling	670 (600)		Rate of descent	FT / MIN	425	480	535	640	745

CHANGES : AD elevation, obstacle elevations, editorial.